

Product datasheet for **TA326190**

c-Myb (MYB) Rabbit Polyclonal Antibody

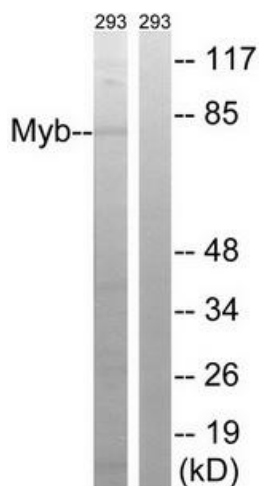
Product data:

Product Type:	Primary Antibodies
Applications:	WB
Recommended Dilution:	WB: 1:500~1:3000 ELISA: 1:40000
Reactivity:	Human, Mouse
Host:	Rabbit
Isotype:	IgG
Clonality:	Polyclonal
Immunogen:	The antiserum was produced against synthesized non-phosphopeptide derived from human Myb around the phosphorylation site of serine 532 (V-E-SP-P-T).
Formulation:	Phosphate buffered saline (without Mg ²⁺ and Ca ²⁺), pH 7.4, 150mM NaCl, 0.02% sodium azide and 50% glycerol.
Concentration:	lot specific
Purification:	The antibody was affinity-purified from rabbit antiserum by affinity-chromatography using epitope-specific immunogen.
Conjugation:	Unconjugated
Storage:	Store at -20°C as received.
Stability:	Stable for 12 months from date of receipt.
Gene Name:	MYB proto-oncogene, transcription factor
Database Link:	NP_005366 Entrez Gene 17863 Mouse Entrez Gene 4602 Human P10242
Synonyms:	c-myb; c-myb_CDS; Cmyb; efg
Protein Families:	Druggable Genome, ES Cell Differentiation/IPS, Stem cell - Pluripotency, Transcription Factors



[View online »](#)

Product images:



Western blot analysis of extracts from 293 cells, using Myb (Ab-532) antibody. The lane on the right is treated with the synthesized peptide.