

## Product datasheet for **TA326188**

### Ezrin (EZR) Rabbit Polyclonal Antibody

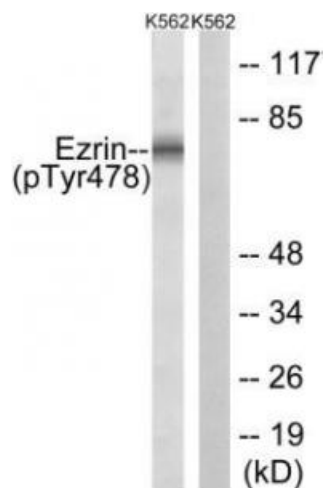
#### Product data:

Product Type:	Primary Antibodies
Applications:	WB
Recommended Dilution:	WB: 1:500~1:3000 ELISA: 1:1000
Reactivity:	Human, Mouse, Rat
Modifications:	Phospho-specific
Host:	Rabbit
Isotype:	IgG
Clonality:	Polyclonal
Immunogen:	The antiserum was produced against synthesized phosphopeptide derived from human Ezrin around the phosphorylation site of tyrosine 478 (P-V-YP-E-P)
Formulation:	Phosphate buffered saline (without Mg <sup>2+</sup> and Ca <sup>2+</sup> ), pH 7.4, 150mM NaCl, 0.02% sodium azide and 50% glycerol.
Concentration:	lot specific
Purification:	The antibody was affinity-purified from rabbit antiserum by affinity-chromatography using epitope-specific immunogen.
Conjugation:	Unconjugated
Storage:	Store at -20°C as received.
Stability:	Stable for 12 months from date of receipt.
Gene Name:	ezrin
Database Link:	<a href="#">NP_003370</a> <a href="#">Entrez Gene 22350 Mouse</a> <a href="#">Entrez Gene 54319 Rat</a> <a href="#">Entrez Gene 7430 Human</a> <a href="#">P15311</a>
Synonyms:	CVIL; CVL; HEL-S-105; VIL2
Protein Families:	Druggable Genome
Protein Pathways:	Leukocyte transendothelial migration, Pathogenic Escherichia coli infection, Regulation of actin cytoskeleton



[View online »](#)

## Product images:



Lane 1: The extracts from K562 cells treated with Na<sub>3</sub>VO<sub>4</sub> (0.3nM, 40mins) using Ezrin (Phospho-Tyr478) antibody  
Lane 2: The extracts from K562 cells treated with Na<sub>3</sub>VO<sub>4</sub> (0.3nM, 40mins) plus phosphopeptide using Ezrin (Phospho-Tyr478) antibody  
The lane on the right is treated with the synthesized peptide.