

Product datasheet for TA326174

SYK Rabbit Polyclonal Antibody

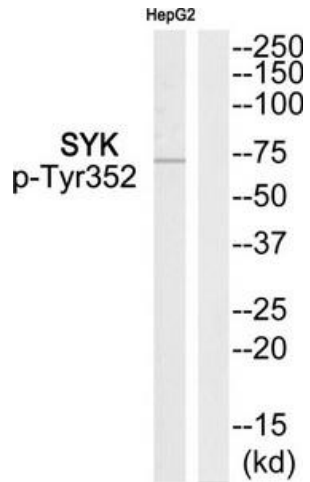
Product data:

Product Type:	Primary Antibodies
Applications:	WB
Recommend Dilution:	WB: 1:500~1:3000 ELISA: 1:10000
Reactivity:	Human, Mouse, Rat
Modifications:	Phospho-specific
Host:	Rabbit
Isotype:	IgG
Clonality:	Polyclonal
Immunogen:	The antiserum was produced against synthesized phosphopeptide derived from human SYK around the phosphorylation site of tyrosine 352.
Formulation:	Phosphate buffered saline (without Mg ²⁺ and Ca ²⁺), pH 7.4, 150mM NaCl, 0.02% sodium azide and 50% glycerol.
Concentration:	lot specific
Purification:	The antibody was affinity-purified from rabbit antiserum by affinity-chromatography using epitope-specific immunogen.
Storage:	Store at -20°C as received.
Stability:	Stable for 12 months from date of receipt.
Gene Name:	spleen tyrosine kinase
Database Link:	NP_003168 Entrez Gene 20963 Mouse Entrez Gene 25155 Rat Entrez Gene 6850 Human
Synonyms:	p72-Syk
Protein Families:	Druggable Genome, Protein Kinase
Protein Pathways:	B cell receptor signaling pathway, Fc epsilon RI signaling pathway, Fc gamma R-mediated phagocytosis, Natural killer cell mediated cytotoxicity

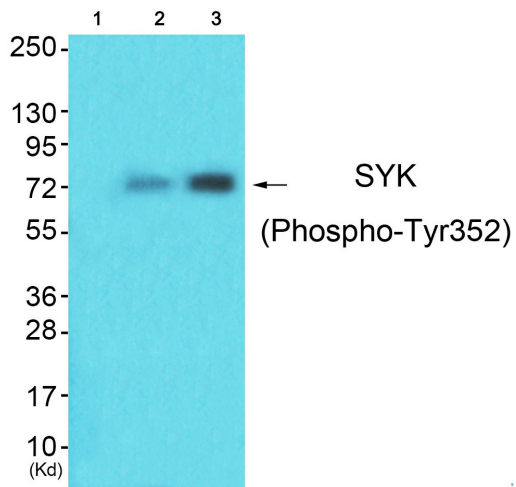


[View online »](#)

Product images:



Western blot analysis of extracts from HepG2 cells, using SYK (Phospho-Tyr352) antibody. The lane on the right is treated with the synthesized peptide.



Western blot analysis of extracts from HuvEc cells (Lane 2) and HepG2 cells (Lane 3), using SYK (Phospho-Tyr352) Antibody. The lane on the left is treated with synthesized peptide.