

Product datasheet for **TA326168**

RSK1 p90 (RPS6KA1) Rabbit Polyclonal Antibody

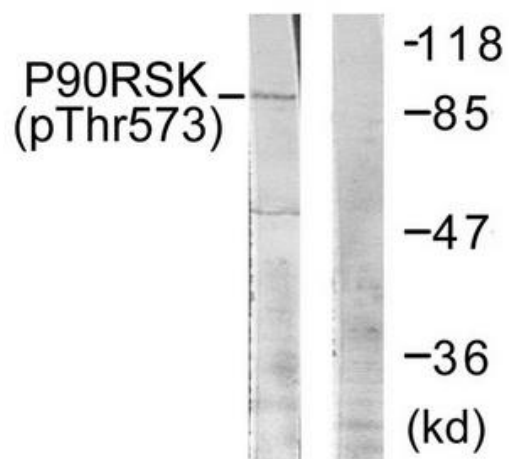
Product data:

Product Type:	Primary Antibodies
Applications:	IHC, WB
Recommended Dilution:	WB: 1:500~1:3000 IHC: 1:50~1:100 IF: 1:100~1:500 ELISA: 1:5000
Reactivity:	Human, Mouse, Rat
Modifications:	Phospho-specific
Host:	Rabbit
Isotype:	IgG
Clonality:	Polyclonal
Immunogen:	The antiserum was produced against synthesized phosphopeptide derived from human P90RSK around the phosphorylation site of threonine 573 (L-M-TP-P-C).
Formulation:	Phosphate buffered saline (without Mg ²⁺ and Ca ²⁺), pH 7.4, 150mM NaCl, 0.02% sodium azide and 50% glycerol.
Concentration:	lot specific
Purification:	The antibody was affinity-purified from rabbit antiserum by affinity-chromatography using epitope-specific immunogen.
Conjugation:	Unconjugated
Storage:	Store at -20°C as received.
Stability:	Stable for 12 months from date of receipt.
Gene Name:	ribosomal protein S6 kinase A1
Database Link:	NP_002944 Entrez Gene 20111 Mouse Entrez Gene 81771 Rat Entrez Gene 6195 Human Q15418
Synonyms:	HU-1; MAPKAPK1A; p90Rsk; RSK; RSK1
Protein Families:	Druggable Genome, Protein Kinase
Protein Pathways:	Long-term potentiation, MAPK signaling pathway, mTOR signaling pathway, Neurotrophin signaling pathway, Oocyte meiosis, Progesterone-mediated oocyte maturation

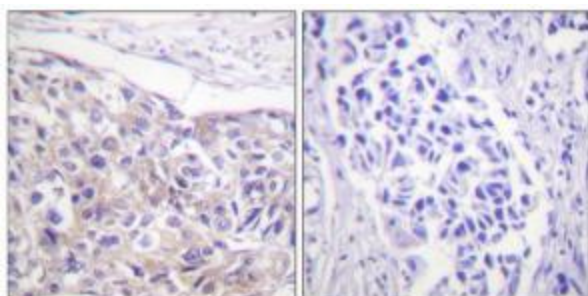


[View online »](#)

Product images:



Western blot analysis of extracts from 293 cells, treated with UV (30mins), using p90 RSK (Phospho-Thr573) antibody. The lane on the right is treated with the synthesized peptide.



Immunohistochemistry analysis of paraffin-embedded human breast carcinoma tissue using p90 RSK (Phospho-Thr573) antibody. The picture on the right is treated with the synthesized peptide.