

## Product datasheet for **TA326167**

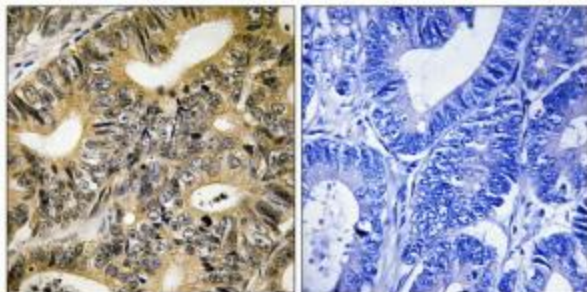
### EIF4EBP1 Rabbit Polyclonal Antibody

#### Product data:

Product Type:	Primary Antibodies
Applications:	IHC
Recommended Dilution:	IHC: 1:50~1:100 ELISA: 1:1000
Reactivity:	Human
Modifications:	Phospho-specific
Host:	Rabbit
Isotype:	IgG
Clonality:	Polyclonal
Immunogen:	The antiserum was produced against synthesized phosphopeptide derived from human 4E-BP1 around the phosphorylation site of threonine 70 (T-K-TP-P-P).
Formulation:	Phosphate buffered saline (without Mg <sup>2+</sup> and Ca <sup>2+</sup> ), pH 7.4, 150mM NaCl, 0.02% sodium azide and 50% glycerol.
Concentration:	lot specific
Purification:	The antibody was affinity-purified from rabbit antiserum by affinity-chromatography using epitope-specific immunogen.
Conjugation:	Unconjugated
Storage:	Store at -20°C as received.
Stability:	Stable for 12 months from date of receipt.
Gene Name:	eukaryotic translation initiation factor 4E binding protein 1
Database Link:	<a href="#">NP_004086</a> <a href="#">Entrez Gene 1978 Human Q13541</a>
Synonyms:	4E-BP1; 4EBP1; BP-1; PHAS-I
Protein Pathways:	Acute myeloid leukemia, ErbB signaling pathway, Insulin signaling pathway, mTOR signaling pathway



[View online »](#)

**Product images:**

Immunohistochemistry analysis of paraffin-embedded human colon carcinoma tissue using 4E-BP1 (Phospho-Thr70) antibody. The picture on the right is treated with the synthesized peptide.