

Product datasheet for **TA326166**

p53 (TP53) Rabbit Polyclonal Antibody

Product data:

Product Type:	Primary Antibodies
Applications:	IHC, WB
Recommended Dilution:	IHC: 1:50~1:100 ELISA: 1:10000WB: 1:500~1:3000 IP: Various Dilution
Reactivity:	Human, Rat
Modifications:	Phospho-specific
Host:	Rabbit
Isotype:	IgG
Clonality:	Polyclonal
Immunogen:	The antiserum was produced against synthesized phosphopeptide derived from human p53 around the phosphorylation site of Serine 15 (P-L-SP-Q-E).
Formulation:	Phosphate buffered saline (without Mg ²⁺ and Ca ²⁺), pH 7.4, 150mM NaCl, 0.02% sodium azide and 50% glycerol.
Concentration:	lot specific
Purification:	The antibody was affinity-purified from rabbit antiserum by affinity-chromatography using epitope-specific immunogen.
Conjugation:	Unconjugated
Storage:	Store at -20°C as received.
Stability:	Stable for 12 months from date of receipt.
Gene Name:	tumor protein p53
Database Link:	NP_000537 Entrez Gene 24842 Rat Entrez Gene 7157 Human P04637
Synonyms:	BCC7; LFS1; P53; TRP53
Protein Families:	Druggable Genome, Stem cell - Pluripotency, Transcription Factors

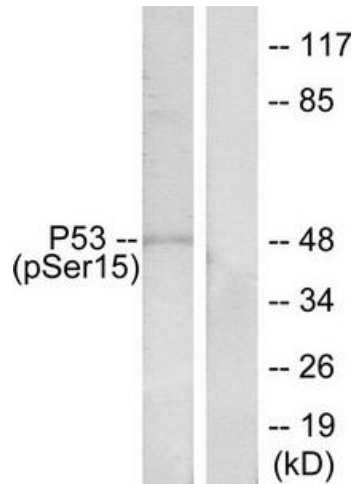


[View online »](#)

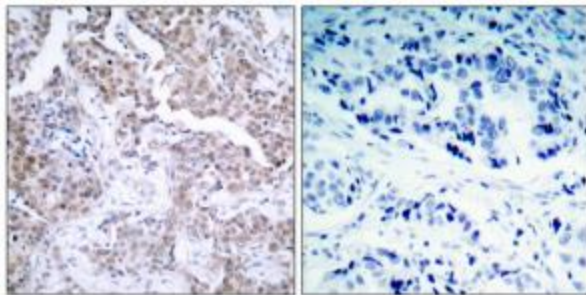
Protein Pathways:

Amyotrophic lateral sclerosis (ALS), Apoptosis, Basal cell carcinoma, Bladder cancer, Cell cycle, Chronic myeloid leukemia, Colorectal cancer, Endometrial cancer, Glioma, Huntington's disease, MAPK signaling pathway, Melanoma, Neurotrophin signaling pathway, Non-small cell lung cancer, p53 signaling pathway, Pancreatic cancer, Pathways in cancer, Prostate cancer, Small cell lung cancer, Thyroid cancer, Wnt signaling pathway

Product images:



Western blot analysis of extracts from COS7 cells, using p53 (Phospho-Ser15) antibody. The lane on the right is treated with the synthesized peptide.



Immunohistochemistry analysis of paraffin-embedded human breast carcinoma tissue, using p53 (Phospho-Ser15) antibody. The picture on the right is treated with the synthesized peptide.