

Product datasheet for **TA326164**

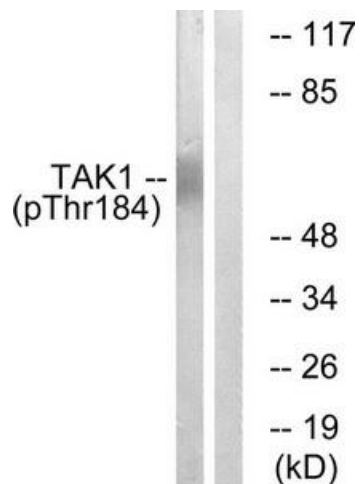
TAK1 (MAP3K7) Rabbit Polyclonal Antibody

Product data:

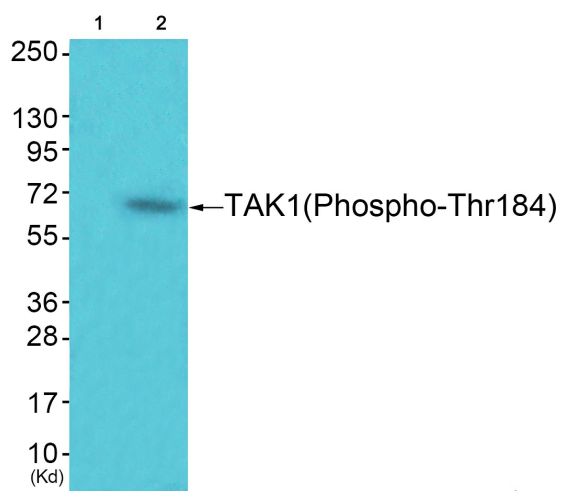
Product Type:	Primary Antibodies
Applications:	WB
Recommended Dilution:	WB: 1:500~1:3000 ELISA: 1:1000
Reactivity:	Human, Mouse, Rat
Modifications:	Phospho-specific
Host:	Rabbit
Isotype:	IgG
Clonality:	Polyclonal
Immunogen:	The antiserum was produced against synthesized phosphopeptide derived from human TAK1 around the phosphorylation site of threonine 184 (I-Q-TP-H-M).
Formulation:	Phosphate buffered saline (without Mg ²⁺ and Ca ²⁺), pH 7.4, 150mM NaCl, 0.02% sodium azide and 50% glycerol.
Concentration:	lot specific
Purification:	The antibody was affinity-purified from rabbit antiserum by affinity-chromatography using epitope-specific immunogen.
Conjugation:	Unconjugated
Storage:	Store at -20°C as received.
Stability:	Stable for 12 months from date of receipt.
Gene Name:	mitogen-activated protein kinase kinase kinase 7
Database Link:	NP_663304 Entrez Gene 26409 Mouse Entrez Gene 313121 Rat Entrez Gene 6885 Human O43318
Synonyms:	MEKK7; TAK1; TGF1a
Protein Families:	Druggable Genome, Protein Kinase
Protein Pathways:	Adherens junction, MAPK signaling pathway, NOD-like receptor signaling pathway, RIG-I-like receptor signaling pathway, T cell receptor signaling pathway, Toll-like receptor signaling pathway, Wnt signaling pathway



[View online »](#)

Product images:


Western blot analysis of extracts from HepG2 cells, treated with TNF (20ng/ml, 5mins), using TAK1 (Phospho-Thr184) antibody. The lane on the right is treated with the synthesized peptide.



Western blot analysis of extracts from 293 cells (Lane 2), using TAK1 (Phospho-Thr184) Antibody. The lane on the left is treated with synthesized peptide.