

Product datasheet for **TA326163**

PAK1 Rabbit Polyclonal Antibody

Product data:

Product Type:	Primary Antibodies
Applications:	IHC, WB
Recommended Dilution:	WB: 1:500~1:3000 IHC: 1:50~1:100 ELISA: 1:1000
Reactivity:	Human, Mouse, Rat
Modifications:	Phospho-specific
Host:	Rabbit
Isotype:	IgG
Clonality:	Polyclonal
Immunogen:	The antiserum was produced against synthesized phosphopeptide derived from human PAK1/2 around the phosphorylation site of serine 199 (T-K-SP-V-Y).
Formulation:	Phosphate buffered saline (without Mg ²⁺ and Ca ²⁺), pH 7.4, 150mM NaCl, 0.02% sodium azide and 50% glycerol.
Concentration:	lot specific
Purification:	The antibody was affinity-purified from rabbit antiserum by affinity-chromatography using epitope-specific immunogen.
Conjugation:	Unconjugated
Storage:	Store at -20°C as received.
Stability:	Stable for 12 months from date of receipt.
Gene Name:	p21 (RAC1) activated kinase 1
Database Link:	NP_001122092 Entrez Gene 18479 Mouse Entrez Gene 29431 Rat Entrez Gene 5058 Human Q13153
Synonyms:	PAKalpha
Protein Families:	Druggable Genome, Protein Kinase, Stem cell - Pluripotency

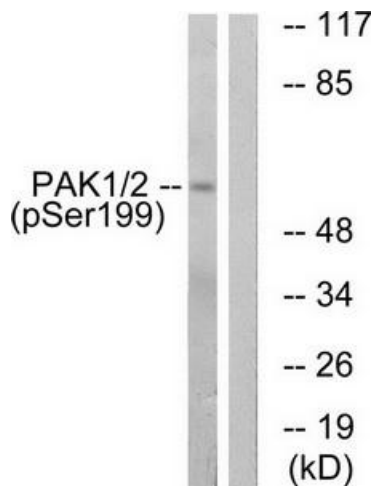


[View online »](#)

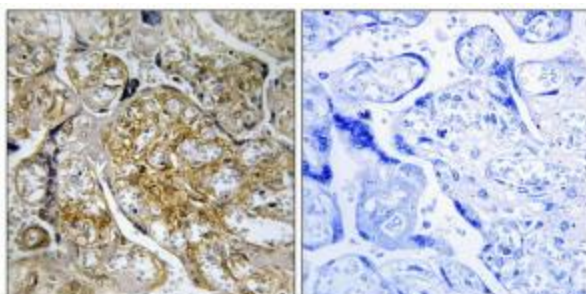
Protein Pathways:

Axon guidance, Chemokine signaling pathway, Epithelial cell signaling in Helicobacter pylori infection, ErbB signaling pathway, Fc gamma R-mediated phagocytosis, Focal adhesion, MAPK signaling pathway, Natural killer cell mediated cytotoxicity, Regulation of actin cytoskeleton, Renal cell carcinoma, T cell receptor signaling pathway

Product images:



Western blot analysis of extracts from LOVO cells, treated with starved (24hours), using PAK1/2 (Phospho-Ser199) antibody. The lane on the right is treated with the synthesized peptide.



Immunohistochemistry analysis of paraffin-embedded human placenta tissue using PAK1/2 (Phospho-Ser199) antibody. The picture on the right is treated with the synthesized peptide.