

Product datasheet for **TA326162**

B Raf (BRAF) Rabbit Polyclonal Antibody

Product data:

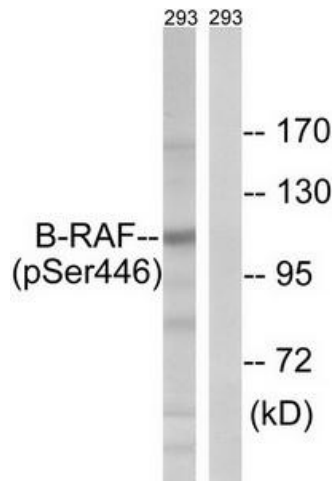
Product Type:	Primary Antibodies
Applications:	IHC, WB
Recommended Dilution:	WB: 1:500~1:3000 IHC: 1:50~1:100 ELISA: 1:10000
Reactivity:	Human, Mouse
Modifications:	Phospho-specific
Host:	Rabbit
Isotype:	IgG
Clonality:	Polyclonal
Immunogen:	The antiserum was produced against synthesized phosphopeptide derived from human B-RAF around the phosphorylation site of serine 446 (R-D-SP-S-D).
Formulation:	Phosphate buffered saline (without Mg ²⁺ and Ca ²⁺), pH 7.4, 150mM NaCl, 0.02% sodium azide and 50% glycerol.
Concentration:	lot specific
Purification:	The antibody was affinity-purified from rabbit antiserum by affinity-chromatography using epitope-specific immunogen.
Conjugation:	Unconjugated
Storage:	Store at -20°C as received.
Stability:	Stable for 12 months from date of receipt.
Gene Name:	B-Raf proto-oncogene, serine/threonine kinase
Database Link:	NP_004324 Entrez Gene 109880 Mouse Entrez Gene 673 Human P15056
Synonyms:	B-raf; B-RAF1; BRAF1; NS7; RAFB1
Protein Families:	Druggable Genome, Protein Kinase



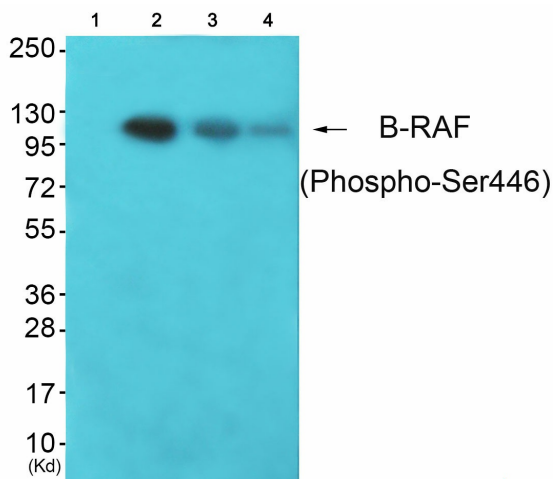
[View online »](#)

Protein Pathways:

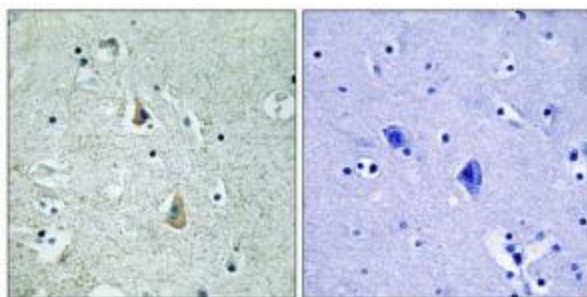
Acute myeloid leukemia, Bladder cancer, Chemokine signaling pathway, Chronic myeloid leukemia, Colorectal cancer, Endometrial cancer, ErbB signaling pathway, Focal adhesion, Glioma, Insulin signaling pathway, Long-term depression, Long-term potentiation, MAPK signaling pathway, Melanoma, mTOR signaling pathway, Natural killer cell mediated cytotoxicity, Neurotrophin signaling pathway, Non-small cell lung cancer, Pancreatic cancer, Pathways in cancer, Progesterone-mediated oocyte maturation, Prostate cancer, Regulation of actin cytoskeleton, Renal cell carcinoma, Thyroid cancer, Vascular smooth muscle contraction

Product images:


Western blot analysis of extracts from 293 cells, treated with EGF (200ng/ml, 30mins), using B-RAF (Phospho-Ser446) antibody. The lane on the right is treated with the synthesized peptide.



Western blot analysis of extracts from K562 cells (Lane 2), JK cells (Lane 3) and 293 cells (Lane 4), using B-RAF (Phospho-Ser446) Antibody. The lane on the left is treated with synthesized peptide.



Immunohistochemistry analysis of paraffin-embedded human brain tissue using B-RAF (Phospho-Ser446) antibody. The picture on the right is treated with the synthesized peptide.