

Product datasheet for **TA326161**

TrkA (NTRK1) Rabbit Polyclonal Antibody

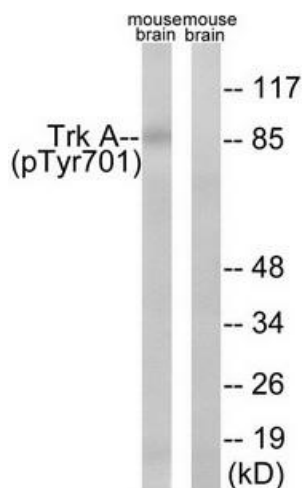
Product data:

Product Type:	Primary Antibodies
Applications:	IHC, WB
Recommended Dilution:	WB: 1:500~1:3000 IHC: 1:50~1:100 ELISA: 1:40000
Reactivity:	Human, Mouse, Rat
Modifications:	Phospho-specific
Host:	Rabbit
Isotype:	IgG
Clonality:	Polyclonal
Immunogen:	The antiserum was produced against synthesized phosphopeptide derived from human Trk A around the phosphorylation site of tyrosine 701 (I-L-YP-R-K).
Formulation:	Phosphate buffered saline (without Mg ²⁺ and Ca ²⁺), pH 7.4, 150mM NaCl, 0.02% sodium azide and 50% glycerol.
Concentration:	lot specific
Purification:	The antibody was affinity-purified from rabbit antiserum by affinity-chromatography using epitope-specific immunogen.
Conjugation:	Unconjugated
Storage:	Store at -20°C as received.
Stability:	Stable for 12 months from date of receipt.
Gene Name:	neurotrophic receptor tyrosine kinase 1
Database Link:	NP_001007793 Entrez Gene 18211 Mouse Entrez Gene 59109 Rat Entrez Gene 4914 Human P04629
Synonyms:	MTC; p140-TrkA; TRK; Trk-A; TRK1; TRKA
Protein Families:	Druggable Genome, Protein Kinase, Transmembrane
Protein Pathways:	Apoptosis, Endocytosis, MAPK signaling pathway, Neurotrophin signaling pathway, Pathways in cancer, Thyroid cancer

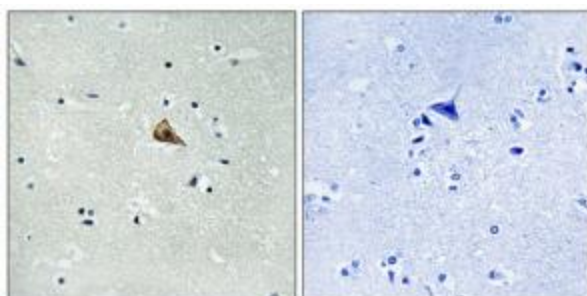


[View online »](#)

Product images:



Western blot analysis of extracts from mouse brain cells, using Trk A (Phospho-Tyr701) antibody. The lane on the right is treated with the synthesized peptide.



Immunohistochemistry analysis of paraffin-embedded human brain tissue using Trk A (Phospho-Tyr701) antibody. The picture on the right is treated with the synthesized peptide.