

## Product datasheet for **TA326159**

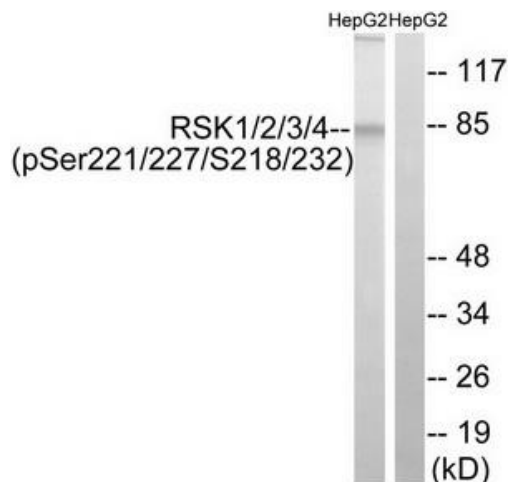
### RSK1 p90 (RPS6KA1) Rabbit Polyclonal Antibody

#### Product data:

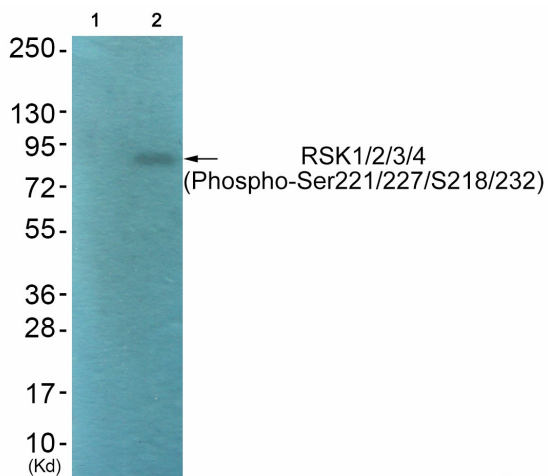
Product Type:	Primary Antibodies
Applications:	WB
Recommended Dilution:	WB: 1:500~1:3000 ELISA: 1:40000
Reactivity:	Human, Mouse
Modifications:	Phospho-specific
Host:	Rabbit
Isotype:	IgG
Clonality:	Polyclonal
Immunogen:	The antiserum was produced against synthesized phosphopeptide derived from human RSK1/2/3/4 around the phosphorylation site of serine 221/227/218/232 (A-Y-SP-F-C).
Formulation:	Phosphate buffered saline (without Mg <sup>2+</sup> and Ca <sup>2+</sup> ), pH 7.4, 150mM NaCl, 0.02% sodium azide and 50% glycerol.
Concentration:	lot specific
Purification:	The antibody was affinity-purified from rabbit antiserum by affinity-chromatography using epitope-specific immunogen.
Conjugation:	Unconjugated
Storage:	Store at -20°C as received.
Stability:	Stable for 12 months from date of receipt.
Gene Name:	ribosomal protein S6 kinase A1
Database Link:	<a href="#">NP_002944</a> <a href="#">Entrez Gene 20111 Mouse</a> <a href="#">Entrez Gene 6195 Human</a> <a href="#">Q15418</a>
Synonyms:	HU-1; MAPKAPK1A; p90Rsk; RSK; RSK1
Protein Families:	Druggable Genome, Protein Kinase
Protein Pathways:	Long-term potentiation, MAPK signaling pathway, mTOR signaling pathway, Neurotrophin signaling pathway, Oocyte meiosis, Progesterone-mediated oocyte maturation



[View online »](#)

**Product images:**


Western blot analysis of extracts from HepG2 cells, treated with EGF (200ng/ml, 30mins), using RSK1/2/3/4 (Phospho-Ser221/227/218/232) antibody. The lane on the right is treated with the synthesized peptide.



Western blot analysis of extracts from HepG2 cells (Lane 2), using RSK1/2/3/4 (Phospho-Ser221/227/218/232) antibody. The lane on the left is treated with synthesized peptide.