

Product datasheet for **TA326154**

Amyloid Precursor Protein (APP) Rabbit Polyclonal Antibody

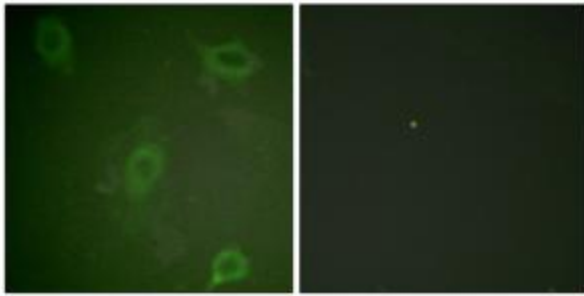
Product data:

Product Type:	Primary Antibodies
Applications:	IF, IHC, WB
Recommended Dilution:	WB: 1:500~1:3000 IHC: 1:50~1:100IF: 1:100~1:500 ELISA: 1:10000
Reactivity:	Human, Mouse, Rat
Modifications:	Phospho-specific
Host:	Rabbit
Isotype:	IgG
Clonality:	Polyclonal
Immunogen:	The antiserum was produced against synthesized phosphopeptide derived from human Amyloid β A4 around the phosphorylation site of threonine 743 (A-V-TP-P-E)
Formulation:	Phosphate buffered saline (without Mg ²⁺ and Ca ²⁺), pH 7.4, 150mM NaCl, 0.02% sodium azide and 50% glycerol.
Concentration:	lot specific
Purification:	The antibody was affinity-purified from rabbit antiserum by affinity-chromatography using epitope-specific immunogen.
Conjugation:	Unconjugated
Storage:	Store at -20°C as received.
Stability:	Stable for 12 months from date of receipt.
Gene Name:	amyloid beta precursor protein
Database Link:	NP_958816 Entrez Gene 11820 Mouse Entrez Gene 54226 Rat Entrez Gene 351 Human P05067
Synonyms:	AAA; ABETA; ABPP; AD1; APPI; CTFgamma; CVAP; PN-II; PN2
Protein Families:	Druggable Genome, Transmembrane
Protein Pathways:	Alzheimer's disease

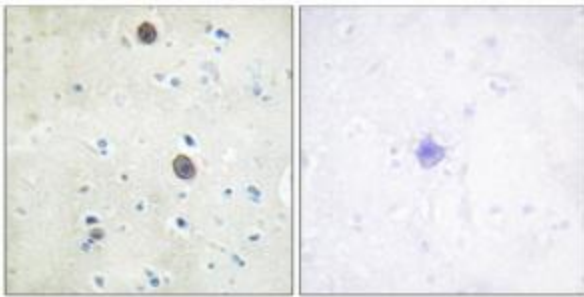


[View online »](#)

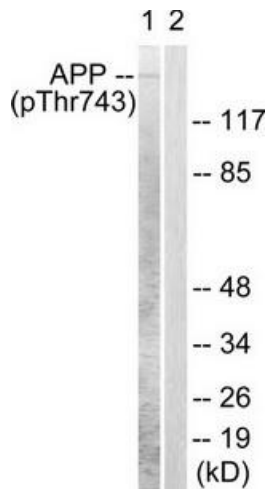
Product images:



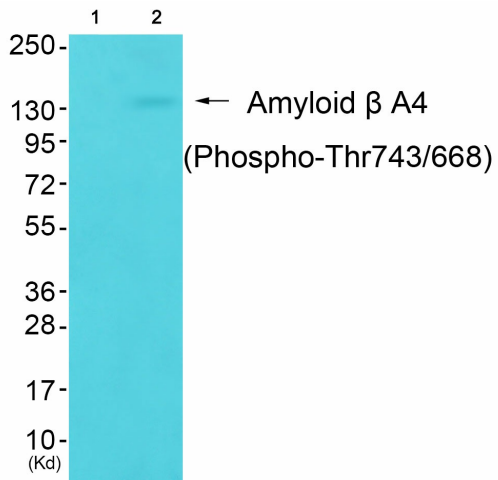
Immunofluorescence analysis of HeLa cells, using Amyloid. A4 (phospho-Thr743/668) antibody. The picture on the right is treated with the synthesized peptide.



Immunohistochemical analysis of paraffin-embedded human brain tissue using Amyloid. A4 (phospho-Thr743/668) antibody. The picture on the right is treated with the synthesized peptide.



Western blot analysis of extracts from HeLa cells, using Amyloid. A4 (phospho-Thr743/668) antibody. The lane on the right is treated with the synthesized peptide.



Western blot analysis of extracts from cos-7 cells (Lane 2), using Amyloid. A4 (Phospho-Thr743/668) Antibody. The lane on the left is treated with synthesized peptide.