

## Product datasheet for **TA326152**

### Caspase 4 (CASP4) Rabbit Polyclonal Antibody

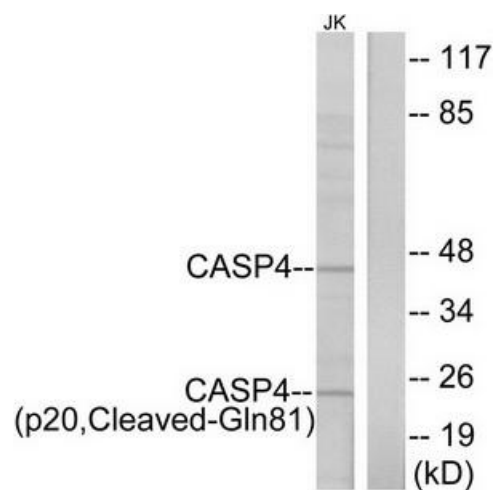
#### Product data:

Product Type:	Primary Antibodies
Applications:	WB
Recommended Dilution:	WB: 1:500~1:3000 ELISA: 1:40000
Reactivity:	Human
Host:	Rabbit
Isotype:	IgG
Clonality:	Polyclonal
Immunogen:	The antiserum was produced against synthesized peptide derived from human CASP4.
Formulation:	Phosphate buffered saline (without Mg <sup>2+</sup> and Ca <sup>2+</sup> ), pH 7.4, 150mM NaCl, 0.02% sodium azide and 50% glycerol.
Concentration:	lot specific
Purification:	The antibody was affinity-purified from rabbit antiserum by affinity-chromatography using epitope-specific immunogen.
Conjugation:	Unconjugated
Storage:	Store at -20°C as received.
Stability:	Stable for 12 months from date of receipt.
Gene Name:	caspase 4
Database Link:	<a href="#">NP_001216</a> <a href="#">Entrez Gene 837 Human</a> <a href="#">P49662</a>
Synonyms:	ICE(rel)II; ICEREL-II; ICH-2; Mih1; TX
Protein Families:	Druggable Genome, Protease



[View online »](#)

## Product images:



Western blot analysis of extracts from Jurkat cells, using CASP4 (p20, Cleaved-Gln81) antibody. The lane on the right is treated with the synthesized peptide.