

Product datasheet for **TA326137**

AMPK beta 1 (PRKAB1) Rabbit Polyclonal Antibody

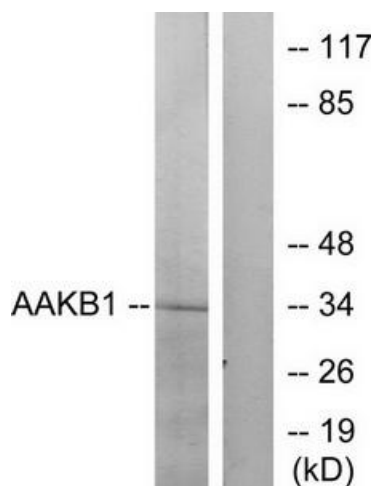
Product data:

Product Type:	Primary Antibodies
Applications:	WB
Recommended Dilution:	WB: 1:500~1:3000 ELISA: 1:10000
Reactivity:	Human, Mouse, Rat
Host:	Rabbit
Isotype:	IgG
Clonality:	Polyclonal
Immunogen:	The antiserum was produced against synthesized peptide derived from N-terminal of human PRKAB1.
Formulation:	Phosphate buffered saline (without Mg ²⁺ and Ca ²⁺), pH 7.4, 150mM NaCl, 0.02% sodium azide and 50% glycerol.
Concentration:	lot specific
Purification:	The antibody was affinity-purified from rabbit antiserum by affinity-chromatography using epitope-specific immunogen.
Conjugation:	Unconjugated
Storage:	Store at -20°C as received.
Stability:	Stable for 12 months from date of receipt.
Gene Name:	protein kinase AMP-activated non-catalytic subunit beta 1
Database Link:	NP_006244 Entrez Gene 19079 Mouse Entrez Gene 83803 Rat Entrez Gene 5564 Human Q9Y478
Synonyms:	AMPK; HAMPKb
Protein Families:	Druggable Genome
Protein Pathways:	Adipocytokine signaling pathway, Hypertrophic cardiomyopathy (HCM), Insulin signaling pathway



[View online »](#)

Product images:



Western blot analysis of extracts from RAW264.7 cells, treated with TNF (20ng/ml, 5mins), using PRKAB1 antibody. The lane on the right is treated with the synthesized peptide.