

Product datasheet for **TA326136**

SMAD4 Rabbit Polyclonal Antibody

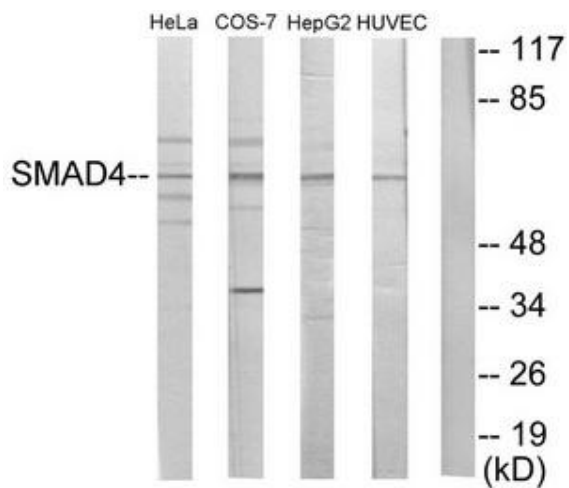
Product data:

Product Type:	Primary Antibodies
Applications:	WB
Recommended Dilution:	WB: 1:500~1:3000 ELISA: 1:10000
Reactivity:	Human, Mouse, Rat
Host:	Rabbit
Isotype:	IgG
Clonality:	Polyclonal
Immunogen:	The antiserum was produced against synthesized peptide derived from internal of human Smad4.
Formulation:	Phosphate buffered saline (without Mg ²⁺ and Ca ²⁺), pH 7.4, 150mM NaCl, 0.02% sodium azide and 50% glycerol.
Concentration:	lot specific
Purification:	The antibody was affinity-purified from rabbit antiserum by affinity-chromatography using epitope-specific immunogen.
Conjugation:	Unconjugated
Storage:	Store at -20°C as received.
Stability:	Stable for 12 months from date of receipt.
Gene Name:	SMAD family member 4
Database Link:	NP_005350 Entrez Gene 17128 MouseEntrez Gene 50554 RatEntrez Gene 4089 Human Q13485
Synonyms:	DPC4; JIP; MADH4; MYHRS
Protein Families:	Druggable Genome, Transcription Factors
Protein Pathways:	Adherens junction, Cell cycle, Chronic myeloid leukemia, Colorectal cancer, Pancreatic cancer, Pathways in cancer, TGF-beta signaling pathway, Wnt signaling pathway



[View online »](#)

Product images:



Western blot analysis of extracts from HeLa cells, COS-7 cells, HepG2 cells and HUVEC cells, using Smad4 antibody. The lane on the right is treated with the synthesized peptide.