

## Product datasheet for **TA326135**

### EGR2 Rabbit Polyclonal Antibody

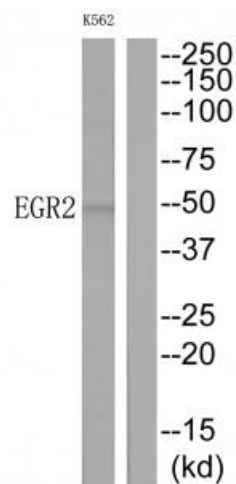
#### Product data:

Product Type:	Primary Antibodies
Applications:	WB
Recommended Dilution:	WB: 1:500~1:1000 ELISA: 1:10000
Reactivity:	Human, Mouse, Rat
Host:	Rabbit
Isotype:	IgG
Clonality:	Polyclonal
Immunogen:	The antiserum was produced against synthesized peptide derived from C-terminal of human EGR2.
Formulation:	Phosphate buffered saline (without Mg <sup>2+</sup> and Ca <sup>2+</sup> ), pH 7.4, 150mM NaCl, 0.02% sodium azide and 50% glycerol.
Concentration:	lot specific
Purification:	The antibody was affinity-purified from rabbit antiserum by affinity-chromatography using epitope-specific immunogen.
Conjugation:	Unconjugated
Storage:	Store at -20°C as received.
Stability:	Stable for 12 months from date of receipt.
Gene Name:	early growth response 2
Database Link:	<a href="#">NP_000390</a> <a href="#">Entrez Gene 13654 MouseEntrez Gene 114090 RatEntrez Gene 1959 Human P11161</a>
Synonyms:	AT591; CMT1D; CMT4E; KROX20
Protein Families:	Druggable Genome, Transcription Factors



[View online »](#)

## Product images:



Western blot analysis of extracts from K562 cells, using EGR2 antibody. The lane on the right is treated with the synthesized peptide.