

Product datasheet for **TA326134**

GAB2 Rabbit Polyclonal Antibody

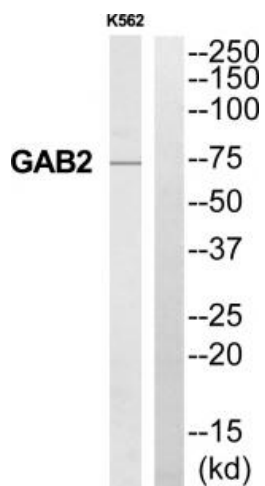
Product data:

Product Type:	Primary Antibodies
Applications:	WB
Recommended Dilution:	WB: 1:500~1:1000 ELISA: 1:10000
Reactivity:	Human, Mouse, Rat
Host:	Rabbit
Isotype:	IgG
Clonality:	Polyclonal
Immunogen:	The antiserum was produced against synthesized peptide derived from Internal of human GAB2.
Formulation:	Phosphate buffered saline (without Mg ²⁺ and Ca ²⁺), pH 7.4, 150mM NaCl, 0.02% sodium azide and 50% glycerol.
Concentration:	lot specific
Purification:	The antibody was affinity-purified from rabbit antiserum by affinity-chromatography using epitope-specific immunogen.
Conjugation:	Unconjugated
Storage:	Store at -20°C as received.
Stability:	Stable for 12 months from date of receipt.
Gene Name:	GRB2 associated binding protein 2
Database Link:	NP_536739 Entrez Gene 14389 MouseEntrez Gene 84477 RatEntrez Gene 9846 Human Q9UQC2
Synonyms:	KIAA0571
Protein Families:	Druggable Genome
Protein Pathways:	Chronic myeloid leukemia, Fc epsilon RI signaling pathway, Fc gamma R-mediated phagocytosis



[View online »](#)

Product images:



Western blot analysis of extracts from K562 cells, using GAB2 antibody. The lane on the right is treated with the synthesized peptide.