

Product datasheet for **TA326132**

TAOK3 Rabbit Polyclonal Antibody

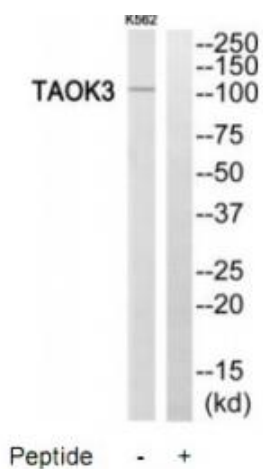
Product data:

Product Type:	Primary Antibodies
Applications:	WB
Recommended Dilution:	WB: 1:500~1:3000 ELISA: 1:10000
Reactivity:	Human, Mouse, Rat
Host:	Rabbit
Isotype:	IgG
Clonality:	Polyclonal
Immunogen:	The antiserum was produced against synthesized peptide derived from internal of human TAOK3.
Formulation:	Phosphate buffered saline (without Mg ²⁺ and Ca ²⁺), pH 7.4, 150mM NaCl, 0.02% sodium azide and 50% glycerol.
Concentration:	lot specific
Purification:	The antibody was affinity-purified from rabbit antiserum by affinity-chromatography using epitope-specific immunogen.
Conjugation:	Unconjugated
Storage:	Store at -20°C as received.
Stability:	Stable for 12 months from date of receipt.
Gene Name:	TAO kinase 3
Database Link:	NP_057365 Entrez Gene 304530 RatEntrez Gene 330177 MouseEntrez Gene 51347 Human Q9H2K8
Synonyms:	DPK; JIK; MAP3K18
Protein Families:	Druggable Genome, Protein Kinase
Protein Pathways:	MAPK signaling pathway



[View online »](#)

Product images:



Western blot analysis of extracts from K562 cells, using TAOK3 antibody. The lane on the right is treated with the synthesized peptide.