

## Product datasheet for **TA326127**

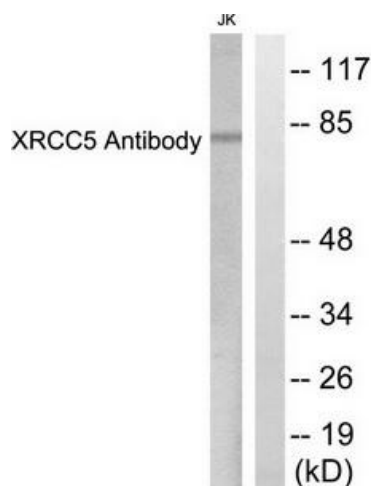
### **Ku80 (XRCC5) Rabbit Polyclonal Antibody**

#### **Product data:**

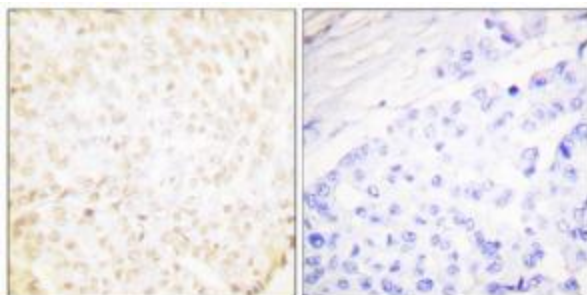
<b>Product Type:</b>	Primary Antibodies
<b>Applications:</b>	IHC, WB
<b>Recommended Dilution:</b>	WB: 1:500~1:3000 IHC: 1:50~1:100 ELISA: 1:5000
<b>Reactivity:</b>	Human, Mouse
<b>Host:</b>	Rabbit
<b>Isotype:</b>	IgG
<b>Clonality:</b>	Polyclonal
<b>Immunogen:</b>	The antiserum was produced against synthesized peptide derived from C-terminal of human XRCC5.
<b>Formulation:</b>	Phosphate buffered saline (without Mg <sup>2+</sup> and Ca <sup>2+</sup> ), pH 7.4, 150mM NaCl, 0.02% sodium azide and 50% glycerol.
<b>Concentration:</b>	lot specific
<b>Purification:</b>	The antibody was affinity-purified from rabbit antiserum by affinity-chromatography using epitope-specific immunogen.
<b>Conjugation:</b>	Unconjugated
<b>Storage:</b>	Store at -20°C as received.
<b>Stability:</b>	Stable for 12 months from date of receipt.
<b>Gene Name:</b>	X-ray repair complementing defective repair in Chinese hamster cells 5
<b>Database Link:</b>	<a href="#">NP_066964</a> <a href="#">Entrez Gene 22596 Mouse</a> <a href="#">Entrez Gene 7520 Human</a> <a href="#">P13010</a>
<b>Synonyms:</b>	KARP-1; KARP1; KU80; Ku86; KUB2; NFIV
<b>Protein Families:</b>	Druggable Genome, Stem cell - Pluripotency
<b>Protein Pathways:</b>	Non-homologous end-joining



[View online »](#)

**Product images:**

Western blot analysis of extracts from Jurkat cells, using XRCC5 antibody. The lane on the right is treated with the synthesized peptide.



Immunohistochemistry analysis of paraffin-embedded human breast carcinoma tissue using XRCC5 antibody. The picture on the right is treated with the synthesized peptide.