

Product datasheet for **TA326123**

HDAC3 Rabbit Polyclonal Antibody

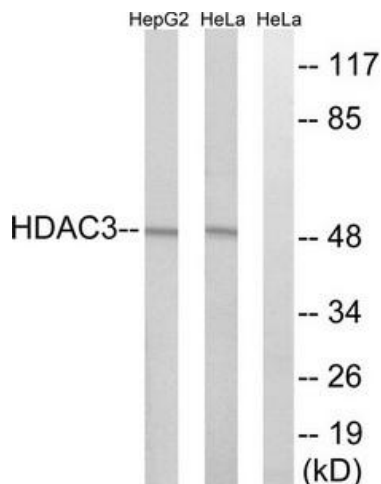
Product data:

Product Type:	Primary Antibodies
Applications:	IF, IHC, WB
Recommended Dilution:	WB: 1:500~1:3000 IHC: 1:50~1:100 IF: 1:100~1:500 ELISA: 1:1000
Reactivity:	Human, Mouse, Rat
Host:	Rabbit
Isotype:	IgG
Clonality:	Polyclonal
Immunogen:	The antiserum was produced against synthesized peptide derived from C-terminal of human HDAC3.
Formulation:	Phosphate buffered saline (without Mg ²⁺ and Ca ²⁺), pH 7.4, 150mM NaCl, 0.02% sodium azide and 50% glycerol.
Concentration:	lot specific
Purification:	The antibody was affinity-purified from rabbit antiserum by affinity-chromatography using epitope-specific immunogen.
Conjugation:	Unconjugated
Storage:	Store at -20°C as received.
Stability:	Stable for 12 months from date of receipt.
Gene Name:	histone deacetylase 3
Database Link:	NP_003874 Entrez Gene 15183 MouseEntrez Gene 84578 RatEntrez Gene 8841 Human O15379
Synonyms:	HD3; RPD3; RPD3-2
Protein Families:	Druggable Genome, Transcription Factors

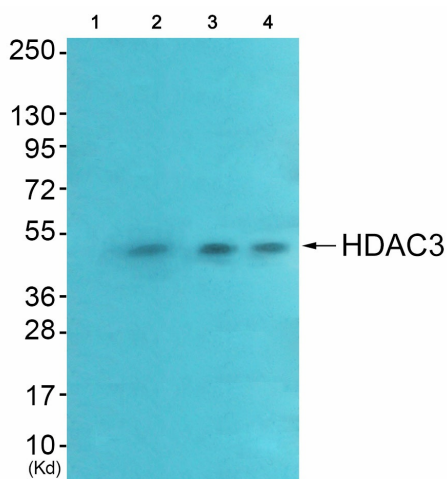


[View online »](#)

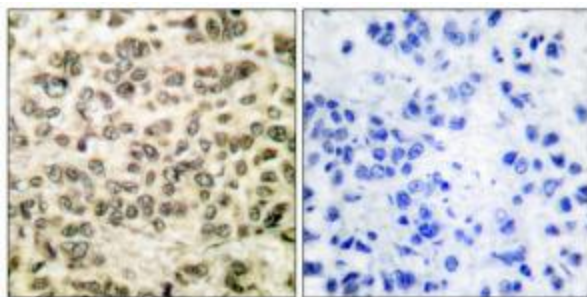
Product images:



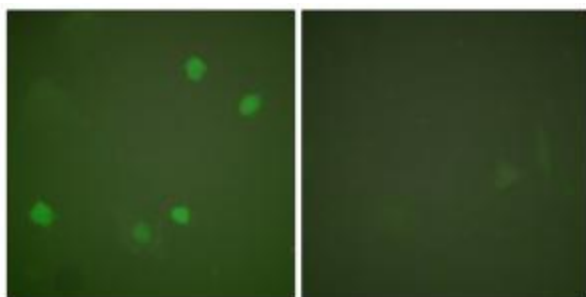
Western blot analysis of extracts from HepG2 cells, using HDAC3 antibody. The lane on the right is treated with the synthesized peptide.



Western blot analysis of extracts from HeLa cells (Lane 2), A549 cells (Lane 3) and HepG2 cells (Lane 4), using HDAC3 Antibody. The lane on the left is treated with synthesized peptide.



Immunohistochemical analysis of paraffin-embedded human breast carcinoma tissue using HDAC3 antibody. The picture on the right is treated with the synthesized peptide.



Immunofluorescence analysis of COS7 cells, using HDAC3 antibody. The picture on the right is treated with the synthesized peptide.