

Product datasheet for **TA326122**

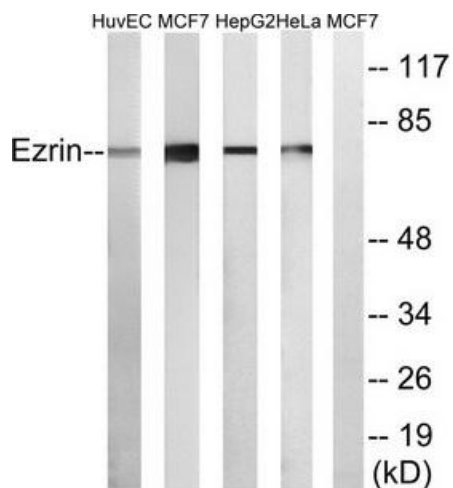
Ezrin (EZR) Rabbit Polyclonal Antibody

Product data:

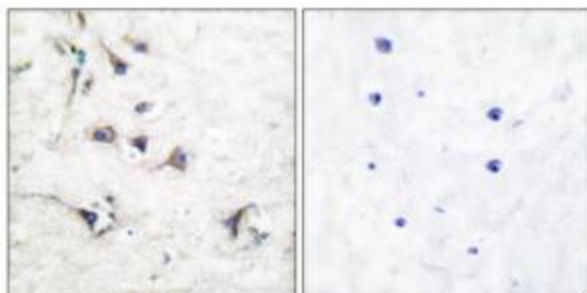
Product Type:	Primary Antibodies
Applications:	IHC, WB
Recommended Dilution:	WB: 1:500~1:3000 IHC: 1:50~1:100ELISA: 1:10000
Reactivity:	Human, Mouse, Rat
Host:	Rabbit
Isotype:	IgG
Clonality:	Polyclonal
Immunogen:	The antiserum was produced against synthesized peptide derived from human Ezrin.
Formulation:	Phosphate buffered saline (without Mg ²⁺ and Ca ²⁺), pH 7.4, 150mM NaCl, 0.02% sodium azide and 50% glycerol.
Concentration:	lot specific
Purification:	The antibody was affinity-purified from rabbit antiserum by affinity-chromatography using epitope-specific immunogen.
Conjugation:	Unconjugated
Storage:	Store at -20°C as received.
Stability:	Stable for 12 months from date of receipt.
Gene Name:	ezrin
Database Link:	NP_003370 Entrez Gene 22350 Mouse Entrez Gene 54319 Rat Entrez Gene 7430 Human P15311
Synonyms:	CVIL; CVL; HEL-S-105; VIL2
Protein Families:	Druggable Genome
Protein Pathways:	Leukocyte transendothelial migration, Pathogenic Escherichia coli infection, Regulation of actin cytoskeleton



[View online »](#)

Product images:


Western blot analysis of extracts from NIH/3T3 cells, using Ezrin antibody (#TA326122). The lane on the right is treated with the synthesized peptide.



Immunohistochemical analysis of paraffin-embedded human brain tissue using Ezrin antibody (#TA326122). The picture on the right is treated with the synthesized peptide.