

## Product datasheet for **TA326119**

### Arginase 1 (ARG1) Rabbit Polyclonal Antibody

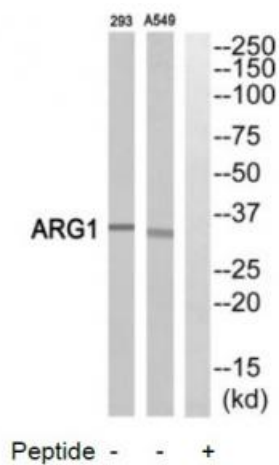
#### Product data:

Product Type:	Primary Antibodies
Applications:	WB
Recommended Dilution:	WB: 1:500~1:3000 ELISA: 1:10000
Reactivity:	Human
Host:	Rabbit
Isotype:	IgG
Clonality:	Polyclonal
Immunogen:	The antiserum was produced against synthesized peptide derived from internal of human ARG1.
Formulation:	Phosphate buffered saline (without Mg <sup>2+</sup> and Ca <sup>2+</sup> ), pH 7.4, 150mM NaCl, 0.02% sodium azide and 50% glycerol.
Concentration:	lot specific
Purification:	The antibody was affinity-purified from rabbit antiserum by affinity-chromatography using epitope-specific immunogen.
Conjugation:	Unconjugated
Storage:	Store at -20°C as received.
Stability:	Stable for 12 months from date of receipt.
Gene Name:	arginase 1
Database Link:	<a href="#">NP_000036</a> <a href="#">Entrez Gene 383 Human</a> <a href="#">P05089</a>
Synonyms:	arginase; arginase 1; liver; liver-type arginase; OTTHUMP00000017209; type I arginase
Protein Families:	Druggable Genome
Protein Pathways:	Arginine and proline metabolism, Metabolic pathways



[View online »](#)

## Product images:



Western blot analysis of extracts from 293 cells and A549 cells, using ARG1 antibody. The lane on the right is treated with the synthesized peptide.