

Product datasheet for **TA326118**

p16INK4A (CDKN2A) Rabbit Polyclonal Antibody

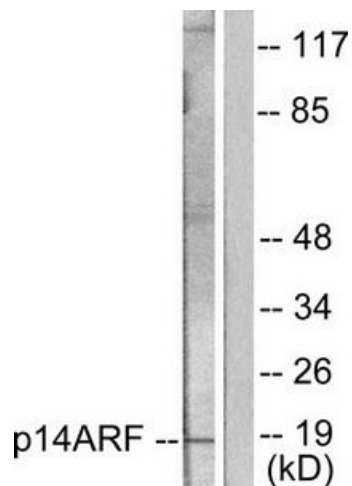
Product data:

| | |
|-----------------------|--|
| Product Type: | Primary Antibodies |
| Applications: | IF, IHC, WB |
| Recommended Dilution: | WB: 1:500~1:3000 IHC: 1:50~1:100IF: 1:100~1:500 ELISA: 1:5000 |
| Reactivity: | Human |
| Host: | Rabbit |
| Isotype: | IgG |
| Clonality: | Polyclonal |
| Immunogen: | The antiserum was produced against synthesized peptide derived from human p14 ARF antibody. |
| Formulation: | Phosphate buffered saline (without Mg ²⁺ and Ca ²⁺), pH 7.4, 150mM NaCl, 0.02% sodium azide and 50% glycerol. |
| Concentration: | lot specific |
| Purification: | The antibody was affinity-purified from rabbit antiserum by affinity-chromatography using epitope-specific immunogen. |
| Conjugation: | Unconjugated |
| Storage: | Store at -20°C as received. |
| Stability: | Stable for 12 months from date of receipt. |
| Gene Name: | cyclin-dependent kinase inhibitor 2A |
| Database Link: | NP_000068 Entrez Gene 1029 Human Q8N726 |
| Synonyms: | ARF; CDK4I; CDKN2; CMM2; INK4; INK4A; MLM; MTS-1; MTS1; P14; P14ARF; P16; P16-INK4A; P16INK4 |
| Protein Families: | Druggable Genome |
| Protein Pathways: | Bladder cancer, Cell cycle, Chronic myeloid leukemia, Glioma, Melanoma, Non-small cell lung cancer, p53 signaling pathway, Pancreatic cancer, Pathways in cancer |

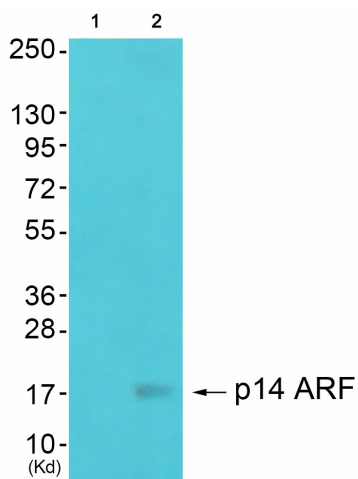


[View online »](#)

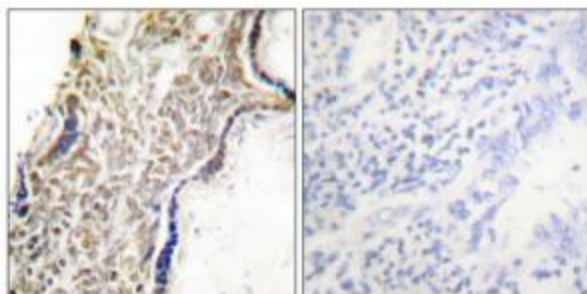
Product images:



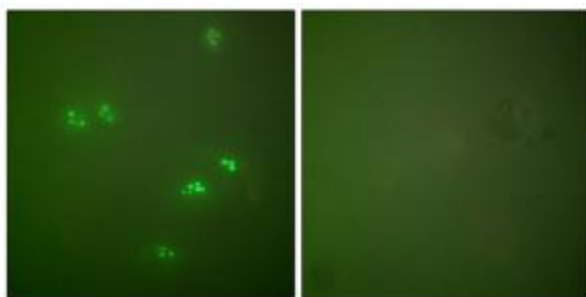
Western blot analysis of extracts from HeLa cells, using p14 ARF antibody (#TA326118).The lane on the right is treated with the synthesized peptide.



Western blot analysis of extracts from 293 cells (Lane 2), using p14 ARF Antibody. The lane on the left is treated with synthesized peptide.



Immunohistochemical analysis of paraffin-embedded human placenta tissue using p14 ARF antibody (#TA326118).The picture on the right is treated with the synthesized peptide.



Immunofluorescence analysis of HeLa cells, using p14 ARF antibody (#TA326118). The picture on the right is treated with the synthesized peptide.