

Product datasheet for **TA326111**

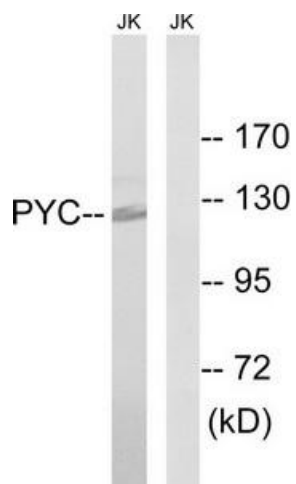
PCB (PC) Rabbit Polyclonal Antibody

Product data:

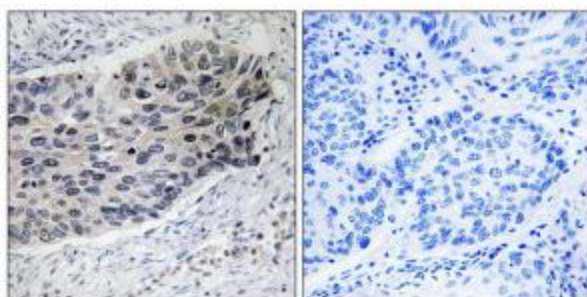
Product Type:	Primary Antibodies
Applications:	IHC, WB
Recommended Dilution:	WB: 1:500~1:3000 IHC: 1:50~1:100 ELISA: 1:40000
Reactivity:	Human, Mouse, Rat
Host:	Rabbit
Isotype:	IgG
Clonality:	Polyclonal
Immunogen:	The antiserum was produced against synthesized peptide derived from internal of human PC.
Formulation:	Phosphate buffered saline (without Mg ²⁺ and Ca ²⁺), pH 7.4, 150mM NaCl, 0.02% sodium azide and 50% glycerol.
Concentration:	lot specific
Purification:	The antibody was affinity-purified from rabbit antiserum by affinity-chromatography using epitope-specific immunogen.
Conjugation:	Unconjugated
Storage:	Store at -20°C as received.
Stability:	Stable for 12 months from date of receipt.
Gene Name:	pyruvate carboxylase
Database Link:	NP_000911 Entrez Gene 25104 Rat Entrez Gene 18517 Mouse Entrez Gene 5091 Human P11498
Synonyms:	PCB
Protein Families:	Druggable Genome
Protein Pathways:	Citrate cycle (TCA cycle), Metabolic pathways, Pyruvate metabolism



[View online »](#)

Product images:

Western blot analysis of extracts from Jurkat cells, using PC antibody. The lane on the right is treated with the synthesized peptide.



Immunohistochemistry analysis of paraffin-embedded human lung carcinoma tissue using PC antibody. The picture on the right is treated with the synthesized peptide.