

Product datasheet for **TA326109**

SCN4B Rabbit Polyclonal Antibody

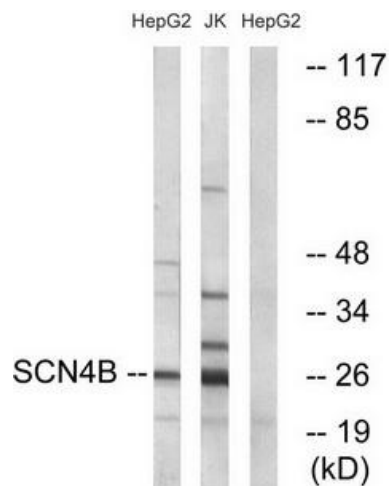
Product data:

Product Type:	Primary Antibodies
Applications:	WB
Recommended Dilution:	WB: 1:500~1:3000 ELISA: 1:10000
Reactivity:	Human, Mouse, Rat
Host:	Rabbit
Isotype:	IgG
Clonality:	Polyclonal
Immunogen:	The antiserum was produced against synthesized peptide derived from internal of human SCN4B.
Formulation:	Phosphate buffered saline (without Mg ²⁺ and Ca ²⁺), pH 7.4, 150mM NaCl, 0.02% sodium azide and 50% glycerol.
Concentration:	lot specific
Purification:	The antibody was affinity-purified from rabbit antiserum by affinity-chromatography using epitope-specific immunogen.
Conjugation:	Unconjugated
Storage:	Store at -20°C as received.
Stability:	Stable for 12 months from date of receipt.
Gene Name:	sodium voltage-gated channel beta subunit 4
Database Link:	NP_777594 Entrez Gene 315611 Rat Entrez Gene 399548 Mouse Entrez Gene 6330 Human Q8IWT1
Synonyms:	ATFB17; LQT10; Navbeta4
Protein Families:	Ion Channels: Sodium, Transmembrane



[View online »](#)

Product images:



Western blot analysis of extracts from HepG2 cells and Jurkat cells, using SCN4B antibody. The lane on the right is treated with the synthesized peptide.