

Product datasheet for **TA326107**

RPC62 (POLR3C) Rabbit Polyclonal Antibody

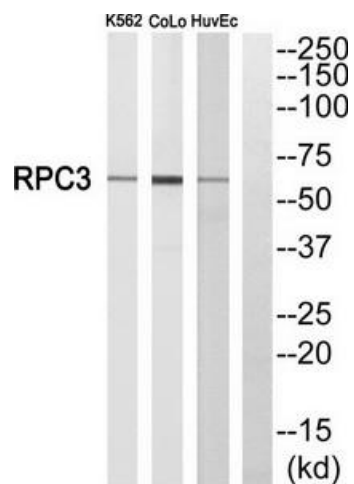
Product data:

Product Type:	Primary Antibodies
Applications:	WB
Recommended Dilution:	WB: 1:500~1:3000 ELISA: 1:40000
Reactivity:	Human
Host:	Rabbit
Isotype:	IgG
Clonality:	Polyclonal
Immunogen:	The antiserum was produced against synthesized peptide derived from internal of human RPC3.
Formulation:	Phosphate buffered saline (without Mg ²⁺ and Ca ²⁺), pH 7.4, 150mM NaCl, 0.02% sodium azide and 50% glycerol.
Concentration:	lot specific
Purification:	The antibody was affinity-purified from rabbit antiserum by affinity-chromatography using epitope-specific immunogen.
Conjugation:	Unconjugated
Storage:	Store at -20°C as received.
Stability:	Stable for 12 months from date of receipt.
Gene Name:	polymerase (RNA) III subunit C
Database Link:	NP_006459 Entrez Gene 10623 Human Q9BUI4
Synonyms:	RPC3; RPC62
Protein Families:	Transcription Factors
Protein Pathways:	Cytosolic DNA-sensing pathway, Metabolic pathways, Purine metabolism, Pyrimidine metabolism, RNA polymerase



[View online »](#)

Product images:



Western blot analysis of extracts from K562 cells, CoLo205 cells and HuvEc cells, using RPC3 antibody. The lane on the right is treated with the synthesized peptide.