

## Product datasheet for **TA326105**

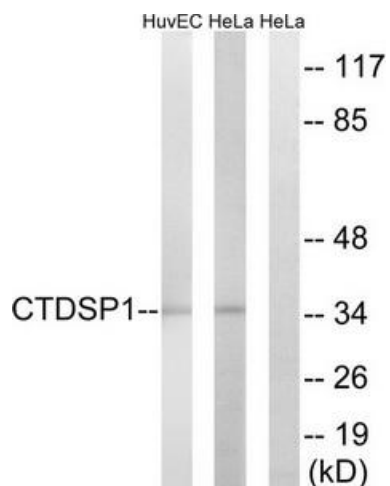
### CTDSP1 Rabbit Polyclonal Antibody

#### Product data:

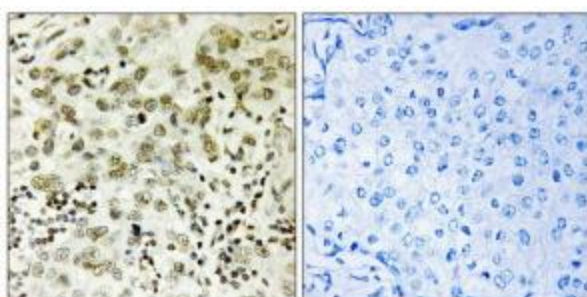
|                       |   |
|-----------------------|---|
| Product Type:         | Primary Antibodies  |
| Applications:         | IHC, WB   |
| Recommended Dilution: | WB: 1:500~1:3000 IHC: 1:50~1:100  |
| Reactivity:           | Human, Mouse, Rat   |
| Host:                 | Rabbit  |
| Isotype:              | IgG   |
| Clonality:            | Polyclonal  |
| Immunogen:            | The antiserum was produced against synthesized peptide derived from N-terminal of human CTDSP1.   |
| Formulation:          | Phosphate buffered saline (without Mg <sup>2+</sup> and Ca <sup>2+</sup> ), pH 7.4, 150mM NaCl, 0.02% sodium azide and 50% glycerol.                                      |
| Concentration:        | lot specific  |
| Purification:         | The antibody was affinity-purified from rabbit antiserum by affinity-chromatography using epitope-specific immunogen.   |
| Conjugation:          | Unconjugated  |
| Storage:              | Store at -20°C as received.   |
| Stability:            | Stable for 12 months from date of receipt.  |
| Gene Name:            | CTD small phosphatase 1   |
| Database Link:        | <a href="#">NP_872580</a><br><a href="#">Entrez Gene 227292</a> <a href="#">MouseEntrez Gene 363249</a> <a href="#">RatEntrez Gene 58190</a> <a href="#">Human Q9GZU7</a> |
| Synonyms:             | NIF3; NLI-IF; NLIIF; SCP1   |
| Protein Families:     | Phosphatase   |



[View online »](#)

**Product images:**


Western blot analysis of extracts from HUVEC cells and HeLa cells, using CTDSP1 antibody. The lane on the right is treated with the synthesized peptide.



Immunohistochemistry analysis of paraffin-embedded human breast carcinoma tissue, using CTDSP1 antibody. The picture on the right is treated with the synthesized peptide.