

## Product datasheet for **TA326101**

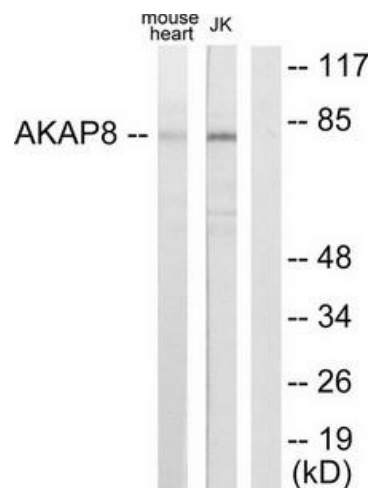
### AKAP8 Rabbit Polyclonal Antibody

#### Product data:

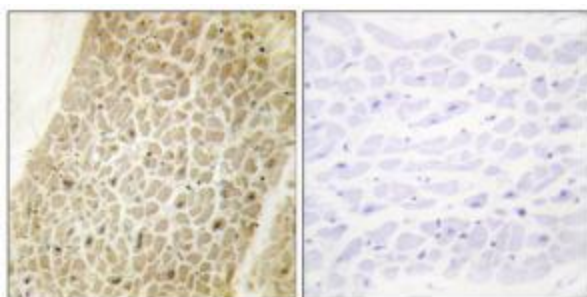
Product Type:	Primary Antibodies
Applications:	IF, IHC, WB
Recommended Dilution:	WB: 1:500~1:3000 IHC: 1:50~1:100 IF: 1:100~1:500 ELISA: 1:20000
Reactivity:	Human, Mouse, Rat
Host:	Rabbit
Isotype:	IgG
Clonality:	Polyclonal
Immunogen:	The antiserum was produced against synthesized peptide derived from internal of human AKAP8.
Formulation:	Phosphate buffered saline (without Mg <sup>2+</sup> and Ca <sup>2+</sup> ), pH 7.4, 150mM NaCl, 0.02% sodium azide and 50% glycerol.
Concentration:	lot specific
Purification:	The antibody was affinity-purified from rabbit antiserum by affinity-chromatography using epitope-specific immunogen.
Conjugation:	Unconjugated
Storage:	Store at -20°C as received.
Stability:	Stable for 12 months from date of receipt.
Gene Name:	A-kinase anchoring protein 8
Database Link:	<a href="#">NP_005849</a> <a href="#">Entrez Gene 56399 Mouse</a> <a href="#">Entrez Gene 116633 Rat</a> <a href="#">Entrez Gene 10270 Human</a> <a href="#">O43823</a>
Synonyms:	AKAP-8; AKAP-95; AKAP 95; AKAP95
Protein Families:	Druggable Genome



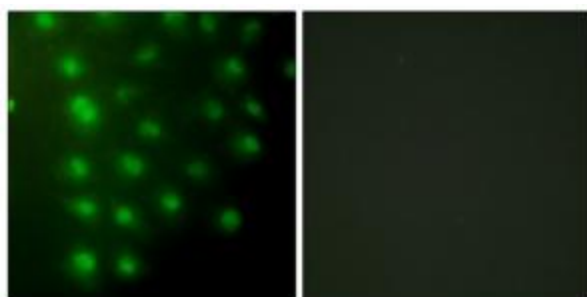
[View online »](#)

**Product images:**


Western blot analysis of extracts from mouse heart cells and Jurkat cells, using AKAP8 antibody. The lane on the right is treated with the synthesized peptide.



Immunohistochemistry analysis of paraffin-embedded human heart tissue using AKAP8 antibody. The picture on the right is treated with the synthesized peptide.



Immunofluorescence analysis of HUVEC cells, using AKAP8 antibody. The picture on the right is treated with the synthesized peptide.