

Product datasheet for **TA326097**

Caveolin 1 (CAV1) Rabbit Polyclonal Antibody

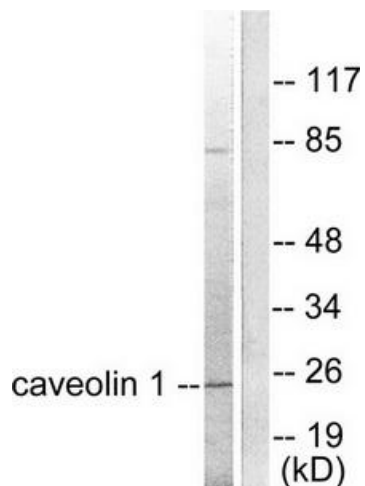
Product data:

Product Type:	Primary Antibodies
Applications:	IF, WB
Recommended Dilution:	WB: 1:500~1:3000 IF: 1:100~1:500ELISA: 1:10000
Reactivity:	Human
Host:	Rabbit
Isotype:	IgG
Clonality:	Polyclonal
Immunogen:	The antiserum was produced against synthesized peptide derived from human Caveolin-1.
Formulation:	Phosphate buffered saline (without Mg ²⁺ and Ca ²⁺), pH 7.4, 150mM NaCl, 0.02% sodium azide and 50% glycerol.
Concentration:	lot specific
Purification:	The antibody was affinity-purified from rabbit antiserum by affinity-chromatography using epitope-specific immunogen.
Conjugation:	Unconjugated
Storage:	Store at -20°C as received.
Stability:	Stable for 12 months from date of receipt.
Gene Name:	caveolin 1
Database Link:	NP_001744 Entrez Gene 857 Human Q03135
Synonyms:	BSCL3; CGL3; LCCNS; MSTP085; PPH3; VIP21
Protein Families:	Druggable Genome, Transmembrane
Protein Pathways:	Focal adhesion, Viral myocarditis

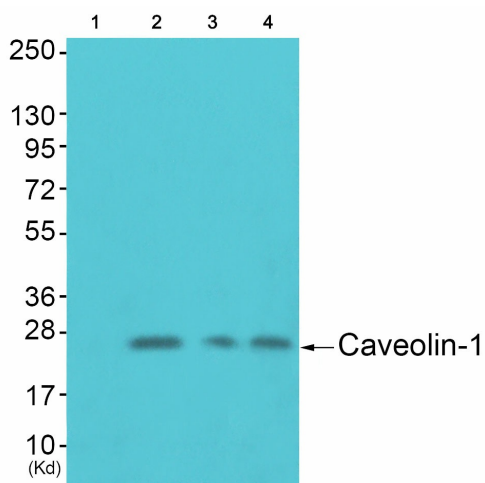


[View online »](#)

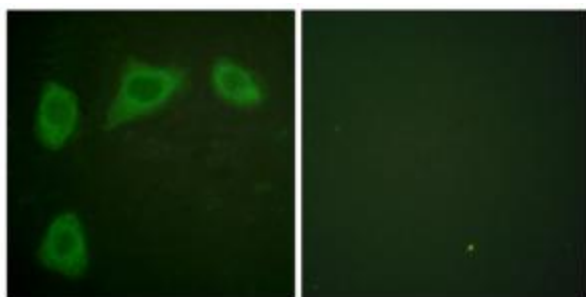
Product images:



Western blot analysis of extracts from HuvEc cells, using Caveolin-1 antibody. The lane on the right is treated with the synthesized peptide.



Western blot analysis of extracts from HuvEc cells (Lane 2), colo cells (Lane 3) and JK cells (Lane 4), using Caveolin-1 Antibody. The lane on the left is treated with synthesized peptide.



Immunofluorescence analysis of HuvEc cells, using Caveolin-1 antibody. The picture on the right is treated with the synthesized peptide.