

Product datasheet for **TA326096**

Bim (BCL2L11) Rabbit Polyclonal Antibody

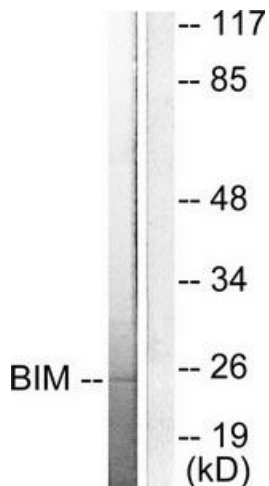
Product data:

Product Type:	Primary Antibodies
Applications:	IHC, WB
Recommended Dilution:	WB: 1:500~1:3000 IHC: 1:50~1:100ELISA: 1:20000
Reactivity:	Human, Mouse, Rat
Host:	Rabbit
Isotype:	IgG
Clonality:	Polyclonal
Immunogen:	The antiserum was produced against synthesized peptide derived from human Bim.
Formulation:	Phosphate buffered saline (without Mg ²⁺ and Ca ²⁺), pH 7.4, 150mM NaCl, 0.02% sodium azide and 50% glycerol.
Concentration:	lot specific
Purification:	The antibody was affinity-purified from rabbit antiserum by affinity-chromatography using epitope-specific immunogen.
Conjugation:	Unconjugated
Storage:	Store at -20°C as received.
Stability:	Stable for 12 months from date of receipt.
Gene Name:	BCL2 like 11
Database Link:	NP_006529 Entrez Gene 12125 Mouse Entrez Gene 64547 Rat Entrez Gene 10018 Human O43521
Synonyms:	BAM; BIM; BOD
Protein Families:	Druggable Genome

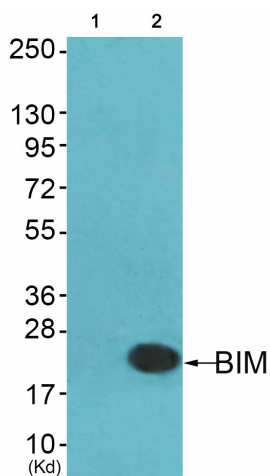


[View online »](#)

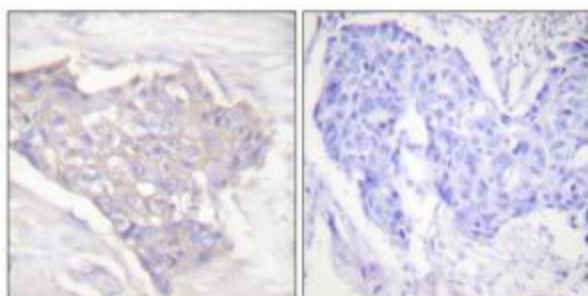
Product images:



Western blot analysis of extracts from COS7, using Bim antibody (#TA326096).The lane on the right is treated with the synthesized peptide.



Western blot analysis of extracts from Jurket cells (Lane 2), using Bim Antibody. The lane on the left is treated with synthesized peptide.



Immunohistochemical analysis of paraffin-embedded human breast carcinoma tissue using Bim antibody (#TA326096).The picture on the right is treated with the synthesized peptide.