

## Product datasheet for **TA326095**

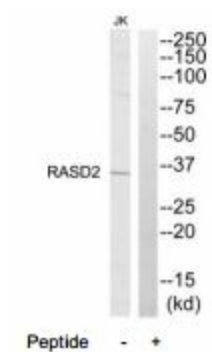
### RASD2 Rabbit Polyclonal Antibody

#### Product data:

Product Type:	Primary Antibodies
Applications:	WB
Recommended Dilution:	WB: 1:500~1:3000 ELISA: 1:40000
Reactivity:	Human, Mouse, Rat
Host:	Rabbit
Isotype:	IgG
Clonality:	Polyclonal
Immunogen:	The antiserum was produced against synthesized peptide derived from C-terminal of human RASD2.
Formulation:	Phosphate buffered saline (without Mg <sup>2+</sup> and Ca <sup>2+</sup> ), pH 7.4, 150mM NaCl, 0.02% sodium azide and 50% glycerol.
Concentration:	lot specific
Purification:	The antibody was affinity-purified from rabbit antiserum by affinity-chromatography using epitope-specific immunogen.
Conjugation:	Unconjugated
Storage:	Store at -20°C as received.
Stability:	Stable for 12 months from date of receipt.
Gene Name:	RASD family member 2
Database Link:	<a href="#">NP_055125</a> <a href="#">Entrez Gene 75141 MouseEntrez Gene 171099 RatEntrez Gene 23551 Human Q96D21</a>
Synonyms:	MGC:4834; Rhes; TEM2
Protein Families:	Druggable Genome



[View online »](#)

**Product images:**

Western blot analysis of extracts from Jurkat cells, using RASD2 antibody.