

## Product datasheet for **TA326090**

### Paxillin (PXN) Rabbit Polyclonal Antibody

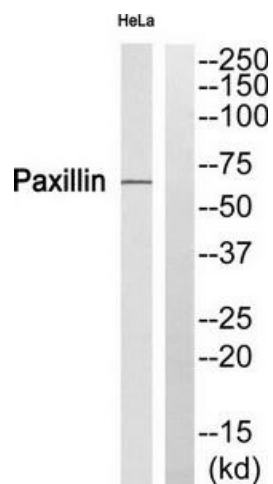
#### Product data:

Product Type:	Primary Antibodies
Applications:	WB
Recommended Dilution:	WB: 1:500~1:3000 ELISA: 1:20000
Reactivity:	Human, Mouse, Rat
Host:	Rabbit
Isotype:	IgG
Clonality:	Polyclonal
Immunogen:	The antiserum was produced against synthesized non-phosphopeptide derived from human Paxillin around the phosphorylation site of serine 272 (M-A-SP-L-S).
Formulation:	Phosphate buffered saline (without Mg <sup>2+</sup> and Ca <sup>2+</sup> ), pH 7.4, 150mM NaCl, 0.02% sodium azide and 50% glycerol.
Concentration:	lot specific
Purification:	The antibody was affinity-purified from rabbit antiserum by affinity-chromatography using epitope-specific immunogen.
Conjugation:	Unconjugated
Storage:	Store at -20°C as received.
Stability:	Stable for 12 months from date of receipt.
Gene Name:	paxillin
Database Link:	<a href="#">NP_002850</a> <a href="#">Entrez Gene 19303 Mouse</a> <a href="#">Entrez Gene 360820 Rat</a> <a href="#">Entrez Gene 5829 Human</a> <a href="#">P49023</a>
Synonyms:	FLJ16691
Protein Families:	Druggable Genome, Stem cell - Pluripotency
Protein Pathways:	Chemokine signaling pathway, Focal adhesion, Leukocyte transendothelial migration, Regulation of actin cytoskeleton, VEGF signaling pathway



[View online »](#)

## Product images:



Western blot analysis of extracts from HeLa cells, using Paxillin (Ab-272) antibody. The lane on the right is treated with the synthesized peptide.