

## Product datasheet for **TA326086**

### STK39 Rabbit Polyclonal Antibody

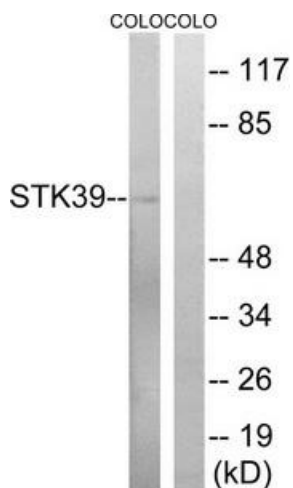
#### Product data:

Product Type:	Primary Antibodies
Applications:	WB
Recommended Dilution:	WB: 1:500~1:3000 ELISA: 1:5000
Reactivity:	Human, Mouse, Rat
Host:	Rabbit
Isotype:	IgG
Clonality:	Polyclonal
Immunogen:	The antiserum was produced against synthesized non-phosphopeptide derived from human STK39 around the phosphorylation site of serine 325 (D-P-SP-K-R).
Formulation:	Phosphate buffered saline (without Mg <sup>2+</sup> and Ca <sup>2+</sup> ), pH 7.4, 150mM NaCl, 0.02% sodium azide and 50% glycerol.
Concentration:	lot specific
Purification:	The antibody was affinity-purified from rabbit antiserum by affinity-chromatography using epitope-specific immunogen.
Conjugation:	Unconjugated
Storage:	Store at -20°C as received.
Stability:	Stable for 12 months from date of receipt.
Gene Name:	serine/threonine kinase 39
Database Link:	<a href="#">NP_037365</a> <a href="#">Entrez Gene 53416 MouseEntrez Gene 54348 RatEntrez Gene 27347 Human Q9UEW8</a>
Synonyms:	DCHT; PASK; SPAK
Protein Families:	Druggable Genome, Protein Kinase

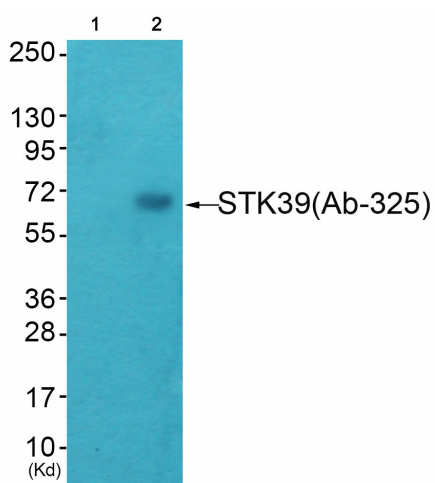


[View online »](#)

Product images:



Western blot analysis of extracts from COLO cells, using STK39 (Ab-325) antibody. The lane on the right is treated with the synthesized peptide.



Western blot analysis of extracts from HeLa cells (Lane 2), using STK39 (Ab-325) Antibody. The lane on the left is treated with synthesized peptide.