

Product datasheet for **TA326081**

FYN Rabbit Polyclonal Antibody

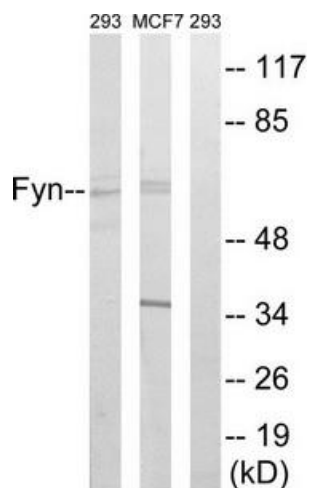
Product data:

Product Type:	Primary Antibodies
Applications:	WB
Recommended Dilution:	WB: 1:500~1:3000 ELISA: 1:1000
Reactivity:	Human, Mouse
Host:	Rabbit
Isotype:	IgG
Clonality:	Polyclonal
Immunogen:	The antiserum was produced against synthesized non-phosphopeptide derived from human Fyn around the phosphorylation site of tyrosine 530 (P-Q-YP-Q-P).
Formulation:	Phosphate buffered saline (without Mg ²⁺ and Ca ²⁺), pH 7.4, 150mM NaCl, 0.02% sodium azide and 50% glycerol.
Concentration:	lot specific
Purification:	The antibody was affinity-purified from rabbit antiserum by affinity-chromatography using epitope-specific immunogen.
Conjugation:	Unconjugated
Storage:	Store at -20°C as received.
Stability:	Stable for 12 months from date of receipt.
Gene Name:	FYN proto-oncogene, Src family tyrosine kinase
Database Link:	NP_002028 Entrez Gene 14360 Mouse Entrez Gene 2534 Human P06241
Synonyms:	p59-FYN; SLK; SYN
Protein Families:	Druggable Genome, Protein Kinase
Protein Pathways:	Adherens junction, Axon guidance, Fc epsilon RI signaling pathway, Focal adhesion, Natural killer cell mediated cytotoxicity, Pathogenic Escherichia coli infection, Prion diseases, T cell receptor signaling pathway, Viral myocarditis

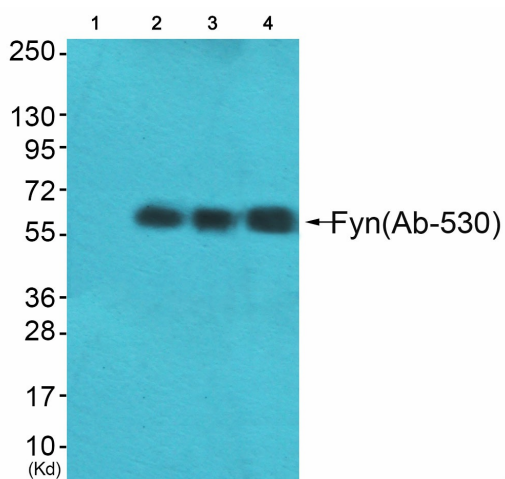


[View online »](#)

Product images:



Western blot analysis of extracts from HUVEC cells, MCF-7 cells and 293 cells, using Fyn (Ab-530) antibody. The lane on the right is treated with the synthesized peptide.



Western blot analysis of extracts from HeLa cells (Lane 2), A549 cells (Lane 3) and HepG2 cells (Lane 4), using Fyn (Ab-530) Antibody. The lane on the left is treated with synthesized peptide.