

## Product datasheet for **TA326080**

### PAK1 Rabbit Polyclonal Antibody

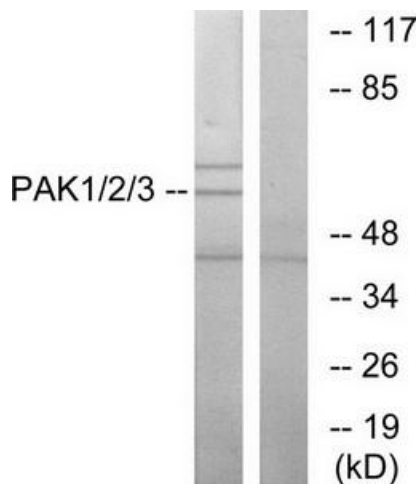
#### Product data:

Product Type:	Primary Antibodies
Applications:	WB
Recommended Dilution:	WB: 1:500~1:3000 IHC: 1:50~1:100 ELISA: 1:20000
Reactivity:	Human, Mouse, Rat
Host:	Rabbit
Isotype:	IgG
Clonality:	Polyclonal
Immunogen:	The antiserum was produced against synthesized non-phosphopeptide derived from human PAK1/2/3 around the phosphorylation site of threonine 423/402/421 (R-S-TP-M-V).
Formulation:	Phosphate buffered saline (without Mg <sup>2+</sup> and Ca <sup>2+</sup> ), pH 7.4, 150mM NaCl, 0.02% sodium azide and 50% glycerol.
Concentration:	lot specific
Purification:	The antibody was affinity-purified from rabbit antiserum by affinity-chromatography using epitope-specific immunogen.
Conjugation:	Unconjugated
Storage:	Store at -20°C as received.
Stability:	Stable for 12 months from date of receipt.
Gene Name:	p21 (RAC1) activated kinase 1
Database Link:	<a href="#">NP_001122092</a> <a href="#">Entrez Gene 18479 MouseEntrez Gene 29431 RatEntrez Gene 5058 Human Q13153</a>
Synonyms:	PAKalpha
Protein Families:	Druggable Genome, Protein Kinase, Stem cell - Pluripotency
Protein Pathways:	Axon guidance, Chemokine signaling pathway, Epithelial cell signaling in Helicobacter pylori infection, ErbB signaling pathway, Fc gamma R-mediated phagocytosis, Focal adhesion, MAPK signaling pathway, Natural killer cell mediated cytotoxicity, Regulation of actin cytoskeleton, Renal cell carcinoma, T cell receptor signaling pathway

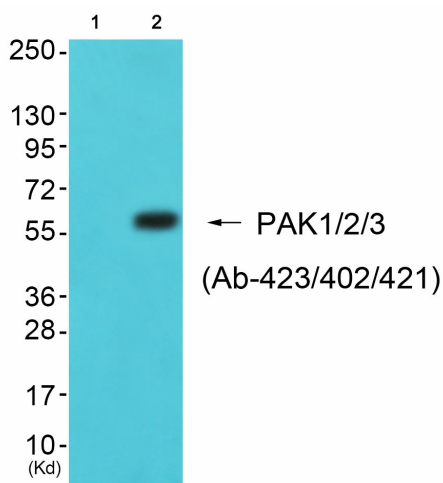


[View online »](#)

Product images:



Western blot analysis of extracts from NIH-3T3 cells, using PAK1/2/3 (Ab-423/402/421) antibody. The lane on the right is treated with the synthesized peptide.



Western blot analysis of extracts from 293 cells (Lane 2), using PAK1/2/3 (Ab-423/402/421) Antibody. The lane on the left is treated with synthesized peptide.