

Product datasheet for TA326079

RSK1 p90 (RPS6KA1) Rabbit Polyclonal Antibody

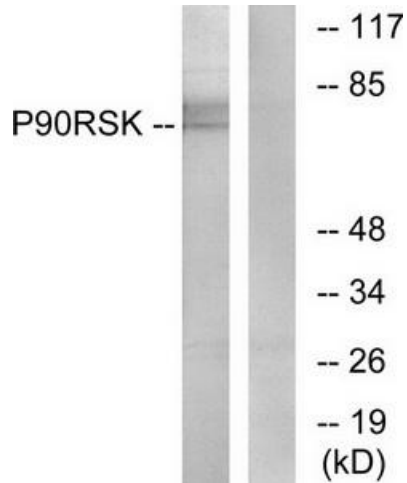
Product data:

| | |
|-----------------------|---|
| Product Type: | Primary Antibodies |
| Applications: | IHC, WB |
| Recommended Dilution: | WB: 1:500~1:3000 IHC: 1:50~1:100 IF: 1:100~1:500 ELISA: 1:1000 |
| Reactivity: | Human, Mouse, Rat |
| Host: | Rabbit |
| Isotype: | IgG |
| Clonality: | Polyclonal |
| Immunogen: | The antiserum was produced against synthesized non-phosphopeptide derived from human p90 RSK around the phosphorylation site of threonine 573 (L-M-TP-P-C). |
| Formulation: | Phosphate buffered saline (without Mg ²⁺ and Ca ²⁺), pH 7.4, 150mM NaCl, 0.02% sodium azide and 50% glycerol. |
| Concentration: | lot specific |
| Purification: | The antibody was affinity-purified from rabbit antiserum by affinity-chromatography using epitope-specific immunogen. |
| Conjugation: | Unconjugated |
| Storage: | Store at -20°C as received. |
| Stability: | Stable for 12 months from date of receipt. |
| Gene Name: | ribosomal protein S6 kinase A1 |
| Database Link: | NP_002944 Entrez Gene 20111 MouseEntrez Gene 81771 RatEntrez Gene 6195 Human Q15418 |
| Synonyms: | HU-1; MAPKAPK1A; p90Rsk; RSK; RSK1 |
| Protein Families: | Druggable Genome, Protein Kinase |
| Protein Pathways: | Long-term potentiation, MAPK signaling pathway, mTOR signaling pathway, Neurotrophin signaling pathway, Oocyte meiosis, Progesterone-mediated oocyte maturation |

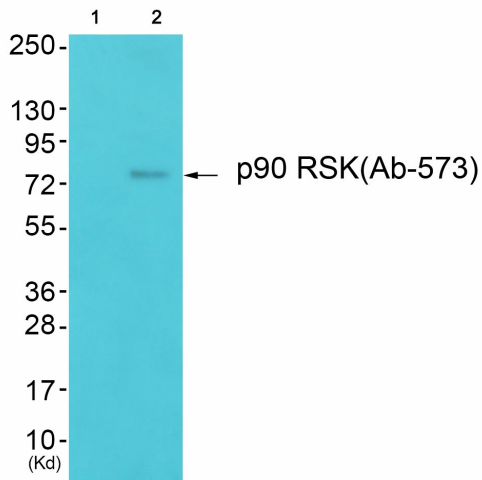


[View online »](#)

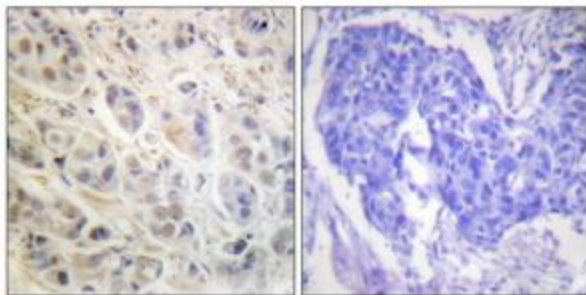
Product images:



Western blot analysis of extracts from 3T3 cells, treated with PMA (125ng/ml, 30mins), using p90 RSK (Ab-573) antibody. The lane on the right is treated with the synthesized peptide.



Western blot analysis of extracts from 293 cells (Lane 2), using p90 RSK (Ab-573) Antibody. The lane on the left is treated with synthesized peptide.



Immunohistochemistry analysis of paraffin-embedded human colon carcinoma tissue using p90 RSK (Ab-573) antibody. The picture on the right is treated with the synthesized peptide.