

Product datasheet for **TA326078**

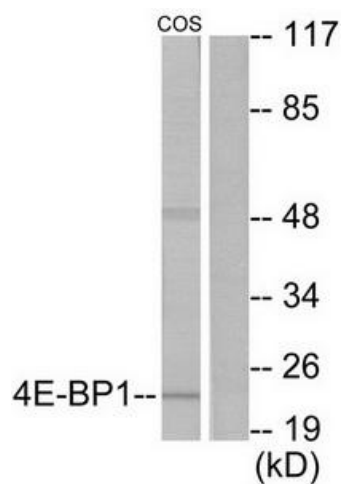
EIF4EBP1 Rabbit Polyclonal Antibody

Product data:

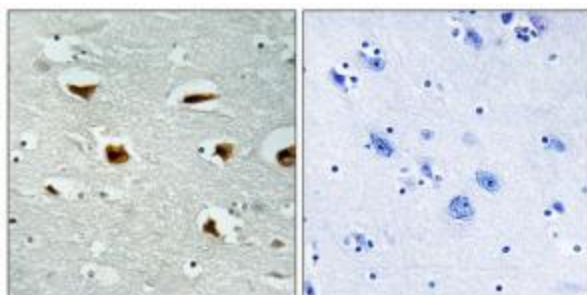
Product Type:	Primary Antibodies
Applications:	IHC, WB
Recommended Dilution:	WB: 1:500~1:3000 IHC: 1:50~1:100ELISA: 1:5000
Reactivity:	Human, Mouse, Rat
Host:	Rabbit
Isotype:	IgG
Clonality:	Polyclonal
Immunogen:	The antiserum was produced against synthesized non-phosphopeptide derived from human 4E-BP1 around the phosphorylation site of threonine 70 (A-K-T-P-P).
Formulation:	Phosphate buffered saline (without Mg ²⁺ and Ca ²⁺), pH 7.4, 150mM NaCl, 0.02% sodium azide and 50% glycerol.
Concentration:	lot specific
Purification:	The antibody was affinity-purified from rabbit antiserum by affinity-chromatography using epitope-specific immunogen.
Conjugation:	Unconjugated
Storage:	Store at -20°C as received.
Stability:	Stable for 12 months from date of receipt.
Gene Name:	eukaryotic translation initiation factor 4E binding protein 1
Database Link:	NP_004086 Entrez Gene 13685 MouseEntrez Gene 116636 RatEntrez Gene 1978 Human Q13541
Synonyms:	4E-BP1; 4EBP1; BP-1; PHAS-I
Protein Pathways:	Acute myeloid leukemia, ErbB signaling pathway, Insulin signaling pathway, mTOR signaling pathway



[View online »](#)

Product images:

Western blot analysis of extracts from COS7 cells, treated with EGF (200ng/ml, 30mins), using 4E-BP1 (Ab-69) antibody (#TA326078). The lane on the right is treated with the synthesized peptide.



Immunohistochemical analysis of paraffin-embedded human colon carcinoma tissue using 4E-BP1 (Ab-69) antibody (#TA326078). The picture on the right is treated with the synthesized peptide.