

## Product datasheet for **TA326073**

### ITCH Rabbit Polyclonal Antibody

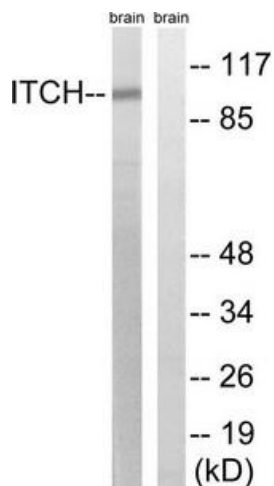
#### Product data:

Product Type:	Primary Antibodies
Applications:	WB
Recommended Dilution:	WB: 1:500~1:3000 ELISA: 1:40000
Reactivity:	Human, Mouse
Host:	Rabbit
Isotype:	IgG
Clonality:	Polyclonal
Immunogen:	The antiserum was produced against synthesized non-phosphopeptide derived from human ITCH around the phosphorylation site of tyrosine 420 (F-I-YP-G-N).
Formulation:	Phosphate buffered saline (without Mg <sup>2+</sup> and Ca <sup>2+</sup> ), pH 7.4, 150mM NaCl, 0.02% sodium azide and 50% glycerol.
Concentration:	lot specific
Purification:	The antibody was affinity-purified from rabbit antiserum by affinity-chromatography using epitope-specific immunogen.
Conjugation:	Unconjugated
Storage:	Store at -20°C as received.
Stability:	Stable for 12 months from date of receipt.
Gene Name:	itchy E3 ubiquitin protein ligase
Database Link:	<a href="#">NP_113671</a> <a href="#">Entrez Gene 16396 Mouse</a> <a href="#">Entrez Gene 83737 Human</a> <a href="#">Q96J02</a>
Synonyms:	ADMFD; AIF4; AIP4; dJ468O1.1; NAPP1
Protein Families:	Druggable Genome, Transcription Factors
Protein Pathways:	Endocytosis, Ubiquitin mediated proteolysis

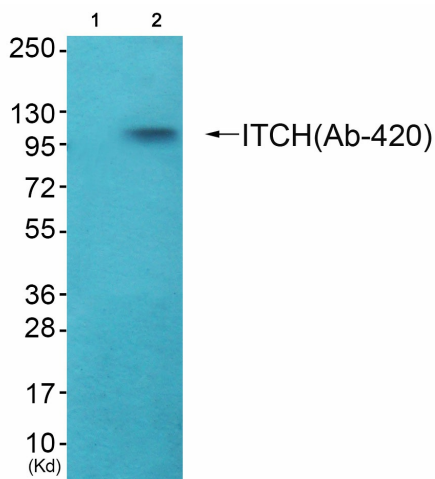


[View online »](#)

Product images:



Western blot analysis of extracts from mouse brain cells, using ITCH (Ab-420) antibody. The lane on the right is treated with the synthesized peptide.



Western blot analysis of extracts from HepG2 cells (Lane 2), using ITCH (Ab-420) Antibody. The lane on the left is treated with synthesized peptide.