

## Product datasheet for **TA326071**

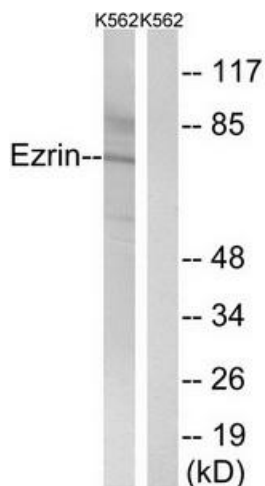
### Ezrin (EZR) Rabbit Polyclonal Antibody

#### Product data:

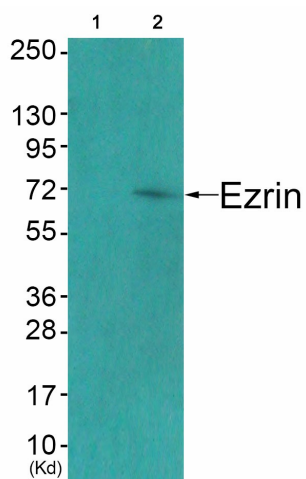
Product Type:	Primary Antibodies
Applications:	WB
Recommended Dilution:	WB: 1:500~1:3000 ELISA: 1:40000
Reactivity:	Human, Mouse, Rat
Host:	Rabbit
Isotype:	IgG
Clonality:	Polyclonal
Immunogen:	The antiserum was produced against synthesized non-phosphopeptide derived from human Ezrin around the phosphorylation site of tyrosine 478 (P-V-YP-E-P).
Formulation:	Phosphate buffered saline (without Mg <sup>2+</sup> and Ca <sup>2+</sup> ), pH 7.4, 150mM NaCl, 0.02% sodium azide and 50% glycerol.
Concentration:	lot specific
Purification:	The antibody was affinity-purified from rabbit antiserum by affinity-chromatography using epitope-specific immunogen.
Conjugation:	Unconjugated
Storage:	Store at -20°C as received.
Stability:	Stable for 12 months from date of receipt.
Gene Name:	ezrin
Database Link:	<a href="#">NP_003370</a> <a href="#">Entrez Gene 22350 MouseEntrez Gene 54319 RatEntrez Gene 7430 Human P15311</a>
Synonyms:	CVIL; CVL; HEL-S-105; VIL2
Protein Families:	Druggable Genome
Protein Pathways:	Leukocyte transendothelial migration, Pathogenic Escherichia coli infection, Regulation of actin cytoskeleton



[View online »](#)

**Product images:**


Western blot analysis of extracts from K562 cells, using Ezrin (Ab-478) antibody. The lane on the right is treated with the synthesized peptide.



Western blot analysis of extracts from COS7 cells (Lane 2), using Ezrin (Ab-478) Antibody. The lane on the left is treated with synthesized peptide.