

## Product datasheet for **TA326070**

### GAB2 Rabbit Polyclonal Antibody

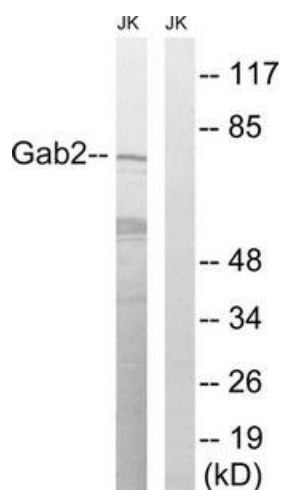
#### Product data:

Product Type:	Primary Antibodies
Applications:	WB
Recommended Dilution:	WB: 1:500~1:3000 ELISA: 1:40000
Reactivity:	Human, Mouse, Rat
Host:	Rabbit
Isotype:	IgG
Clonality:	Polyclonal
Immunogen:	The antiserum was produced against synthesized non-phosphopeptide derived from human Gab2 around the phosphorylation site of serine 623 (P-S-SP-P-S).
Formulation:	Phosphate buffered saline (without Mg <sup>2+</sup> and Ca <sup>2+</sup> ), pH 7.4, 150mM NaCl, 0.02% sodium azide and 50% glycerol.
Concentration:	lot specific
Purification:	The antibody was affinity-purified from rabbit antiserum by affinity-chromatography using epitope-specific immunogen.
Conjugation:	Unconjugated
Storage:	Store at -20°C as received.
Stability:	Stable for 12 months from date of receipt.
Gene Name:	GRB2 associated binding protein 2
Database Link:	<a href="#">NP_536739</a> <a href="#">Entrez Gene 14389 MouseEntrez Gene 84477 RatEntrez Gene 9846 Human Q9UQC2</a>
Synonyms:	KIAA0571
Protein Families:	Druggable Genome
Protein Pathways:	Chronic myeloid leukemia, Fc epsilon RI signaling pathway, Fc gamma R-mediated phagocytosis



[View online »](#)

## Product images:



Western blot analysis of extracts from Jurkat cells, treated with TNF (2500U/ml, 30mins), using Gab2 (Ab-623) antibody. The lane on the right is treated with the synthesized peptide.