

Product datasheet for **TA326068**

ATF2 Rabbit Polyclonal Antibody

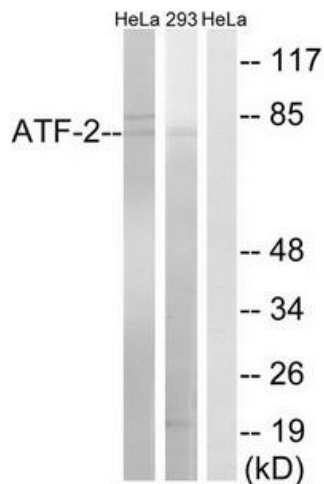
Product data:

| | |
|-----------------------|--|
| Product Type: | Primary Antibodies |
| Applications: | WB |
| Recommended Dilution: | WB: 1:500~1:3000 ELISA: 1:20000 |
| Reactivity: | Human, Mouse, Rat |
| Host: | Rabbit |
| Isotype: | IgG |
| Clonality: | Polyclonal |
| Immunogen: | The antiserum was produced against synthesized non-phosphopeptide derived from human ATF-2 around the phosphorylation site of serine 472 (A-L-SP-Q-I). |
| Formulation: | Phosphate buffered saline (without Mg ²⁺ and Ca ²⁺), pH 7.4, 150mM NaCl, 0.02% sodium azide and 50% glycerol. |
| Concentration: | lot specific |
| Purification: | The antibody was affinity-purified from rabbit antiserum by affinity-chromatography using epitope-specific immunogen. |
| Conjugation: | Unconjugated |
| Storage: | Store at -20°C as received. |
| Stability: | Stable for 12 months from date of receipt. |
| Gene Name: | activating transcription factor 2 |
| Database Link: | NP_001243019 Entrez Gene 11909 Mouse Entrez Gene 81647 Rat Entrez Gene 1386 Human P15336 |
| Synonyms: | CRE-BP1; CREB-2; CREB2; HB16; TREB7 |
| Protein Families: | Druggable Genome, Transcription Factors |
| Protein Pathways: | MAPK signaling pathway |

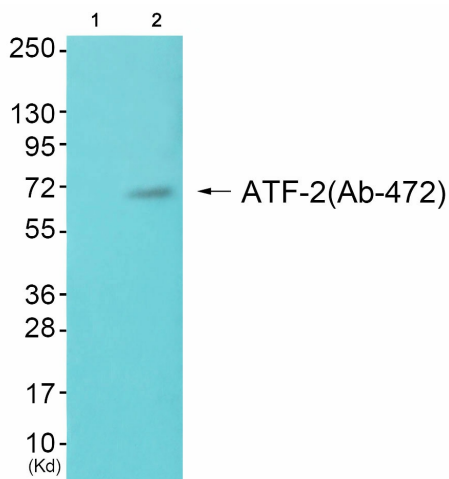


[View online »](#)

Product images:



Western blot analysis of extracts from HeLa cells and 293 cells, using ATF-2 (Ab-472) antibody. The lane on the right is treated with the synthesized peptide.



Western blot analysis of extracts from JK cells (Lane 2), using ATF-2 (Ab-472) Antibody. The lane on the left is treated with synthesized peptide