

Product datasheet for TA326064

GAB2 Rabbit Polyclonal Antibody

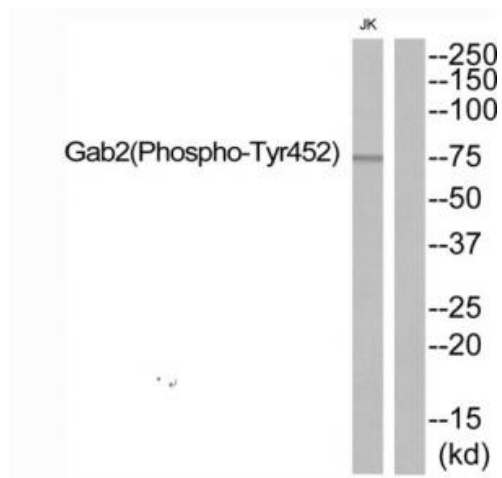
Product data:

| | |
|---------------------|--|
| Product Type: | Primary Antibodies |
| Applications: | WB |
| Recommend Dilution: | WB: 1:500~1:3000 ELISA: 1:10000 |
| Modifications: | Phospho-specific |
| Host: | Rabbit |
| Isotype: | IgG |
| Clonality: | Polyclonal |
| Immunogen: | The antiserum was produced against synthesized phosphopeptide derived from human Gab2 around the phosphorylation site of Tyr452 |
| Formulation: | Phosphate buffered saline (without Mg ²⁺ and Ca ²⁺), pH 7.4, 150mM NaCl, 0.02% sodium azide and 50% glycerol. |
| Concentration: | lot specific |
| Purification: | The antibody was affinity-purified from rabbit antiserum by affinity-chromatography using epitope-specific immunogen. |
| Storage: | Store at -20°C as received. |
| Stability: | Stable for 12 months from date of receipt. |
| Gene Name: | GRB2 associated binding protein 2 |
| Database Link: | NP_536739 Entrez Gene 9846 Human |
| Synonyms: | KIAA0571 |
| Protein Families: | Druggable Genome |
| Protein Pathways: | Chronic myeloid leukemia, Fc epsilon RI signaling pathway, Fc gamma R-mediated phagocytosis |



[View online »](#)

Product images:



Western blot analysis of extracts from JK, using Gab2 (Phospho-Tyr452) Antibody. The lane on the right is treated with the synthesized peptide.