

## Product datasheet for **TA326058**

### **p38 (MAPK14) Rabbit Polyclonal Antibody**

#### **Product data:**

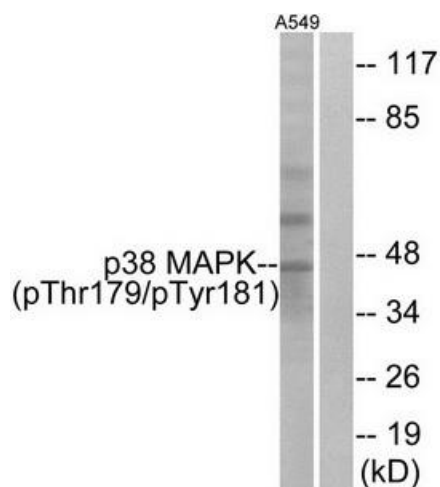
<b>Product Type:</b>	Primary Antibodies
<b>Applications:</b>	WB
<b>Recommended Dilution:</b>	WB: 1:500~1:3000 ELISA: 1:5000
<b>Reactivity:</b>	Human, Mouse, Rat
<b>Modifications:</b>	Phospho-specific
<b>Host:</b>	Rabbit
<b>Isotype:</b>	IgG
<b>Clonality:</b>	Polyclonal
<b>Immunogen:</b>	The antiserum was produced against synthesized phosphopeptide derived from human p38 MAPK around the phosphorylation site of threonine 179 and tyrosine 181 (E-M-TP-G-YP-V-A).
<b>Formulation:</b>	Phosphate buffered saline (without Mg <sup>2+</sup> and Ca <sup>2+</sup> ), pH 7.4, 150mM NaCl, 0.02% sodium azide and 50% glycerol.
<b>Concentration:</b>	lot specific
<b>Purification:</b>	The antibody was affinity-purified from rabbit antiserum by affinity-chromatography using epitope-specific immunogen.
<b>Conjugation:</b>	Unconjugated
<b>Storage:</b>	Store at -20°C as received.
<b>Stability:</b>	Stable for 12 months from date of receipt.
<b>Gene Name:</b>	mitogen-activated protein kinase 14
<b>Database Link:</b>	<a href="#">NP_001306</a> <a href="#">Entrez Gene 26416 Mouse</a> <a href="#">Entrez Gene 81649 Rat</a> <a href="#">Entrez Gene 1432 Human</a> <a href="#">Q16539</a>
<b>Synonyms:</b>	CSBP; CSBP1; CSBP2; CSPB1; EXIP; Mxi2; p38; p38ALPHA; PRKM14; PRKM15; RK; SAPK2A
<b>Protein Families:</b>	Druggable Genome, Protein Kinase



[View online »](#)

**Protein Pathways:**

Amyotrophic lateral sclerosis (ALS), Epithelial cell signaling in Helicobacter pylori infection, Fc epsilon RI signaling pathway, GnRH signaling pathway, Leukocyte transendothelial migration, MAPK signaling pathway, Neurotrophin signaling pathway, NOD-like receptor signaling pathway, Progesterone-mediated oocyte maturation, RIG-I-like receptor signaling pathway, T cell receptor signaling pathway, Toll-like receptor signaling pathway, VEGF signaling pathway

**Product images:**

Western blot analysis of extracts from A549 cells, treated with etoposide (25uM, 24hours), using p38 MAPK (Phospho-Thr179+Tyr181) antibody. The lane on the right is treated with the synthesized peptide.