

Product datasheet for **TA326057**

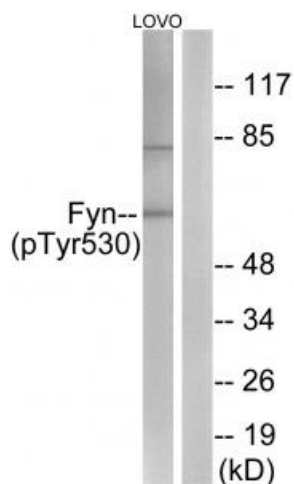
FYN Rabbit Polyclonal Antibody

Product data:

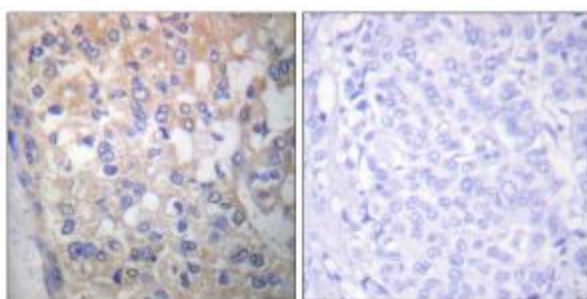
Product Type:	Primary Antibodies
Applications:	IHC, WB
Recommended Dilution:	WB: 1:500~1:3000 IHC: 1:50~1:100ELISA: 1:1000
Reactivity:	Human, Mouse
Modifications:	Phospho-specific
Host:	Rabbit
Isotype:	IgG
Clonality:	Polyclonal
Immunogen:	The antiserum was produced against synthesized phosphopeptide derived from human Fyn around the phosphorylation site of tyrosine 530 (P-Q-YP-Q-P).
Formulation:	Phosphate buffered saline (without Mg ²⁺ and Ca ²⁺), pH 7.4, 150mM NaCl, 0.02% sodium azide and 50% glycerol.
Concentration:	lot specific
Purification:	The antibody was affinity-purified from rabbit antiserum by affinity-chromatography using epitope-specific immunogen.
Conjugation:	Unconjugated
Storage:	Store at -20°C as received.
Stability:	Stable for 12 months from date of receipt.
Gene Name:	FYN proto-oncogene, Src family tyrosine kinase
Database Link:	NP_002028 Entrez Gene 14360 Mouse Entrez Gene 2534 Human P06241
Synonyms:	p59-FYN; SLK; SYN
Protein Families:	Druggable Genome, Protein Kinase
Protein Pathways:	Adherens junction, Axon guidance, Fc epsilon RI signaling pathway, Focal adhesion, Natural killer cell mediated cytotoxicity, Pathogenic Escherichia coli infection, Prion diseases, T cell receptor signaling pathway, Viral myocarditis



[View online »](#)

Product images:

Western blot analysis of extracts from LOVO cells, using Fyn (Phospho-Tyr530) antibody (#TA326057). The lane on the right is treated with the synthesized peptide.



Immunohistochemical analysis of paraffin-embedded human breast carcinoma tissue, using Fyn (Phospho-Tyr530) antibody (#TA326057). The picture on the right is treated with the synthesized peptide.