

Product datasheet for **TA326049**

EIF4EBP1 Rabbit Polyclonal Antibody

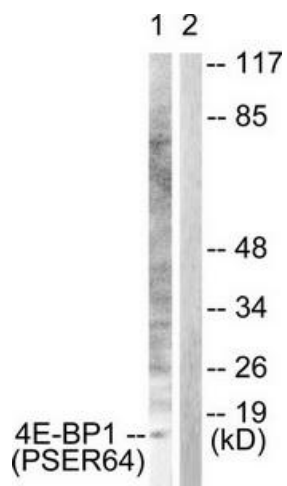
Product data:

Product Type:	Primary Antibodies
Applications:	IHC, WB
Recommended Dilution:	WB: 1:500~1:3000 IHC: 1:50~1:100ELISA: 1:1000
Reactivity:	Human, Mouse, Rat
Modifications:	Phospho-specific
Host:	Rabbit
Isotype:	IgG
Clonality:	Polyclonal
Immunogen:	The antiserum was produced against synthesized phosphopeptide derived from human 4E-BP1 around the phosphorylation site of serine 64 (R-N-SP-P-V)
Formulation:	Phosphate buffered saline (without Mg ²⁺ and Ca ²⁺), pH 7.4, 150mM NaCl, 0.02% sodium azide and 50% glycerol.
Concentration:	lot specific
Purification:	The antibody was affinity-purified from rabbit antiserum by affinity-chromatography using epitope-specific immunogen.
Conjugation:	Unconjugated
Storage:	Store at -20°C as received.
Stability:	Stable for 12 months from date of receipt.
Gene Name:	eukaryotic translation initiation factor 4E binding protein 1
Database Link:	NP_004086 Entrez Gene 13685 Mouse Entrez Gene 116636 Rat Entrez Gene 1978 Human Q13541
Synonyms:	4E-BP1; 4EBP1; BP-1; PHAS-I
Protein Pathways:	Acute myeloid leukemia, ErbB signaling pathway, Insulin signaling pathway, mTOR signaling pathway

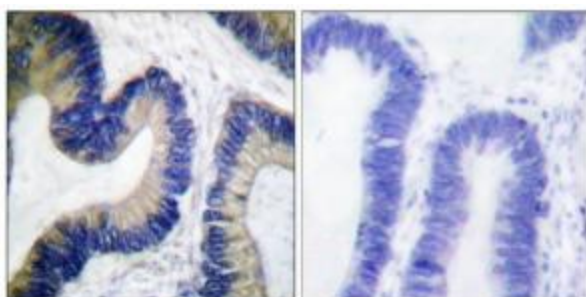


[View online »](#)

Product images:



Western blot analysis of extracts from Jurkat cells, treated with Insulin (0.01U/ml, 15mins), using 4E-BP1 (Phospho-Ser64) antibody (#TA326049). The lane on the right is treated with the synthesized peptide.



Immunohistochemical analysis of paraffin-embedded human colon carcinoma tissue using 4E-BP1 (Phospho-Ser64) antibody (#TA326049). The picture on the right is treated with the synthesized peptide.