

Product datasheet for **TA326048**

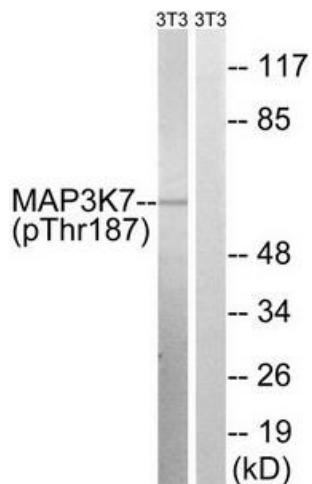
TAK1 (MAP3K7) Rabbit Polyclonal Antibody

Product data:

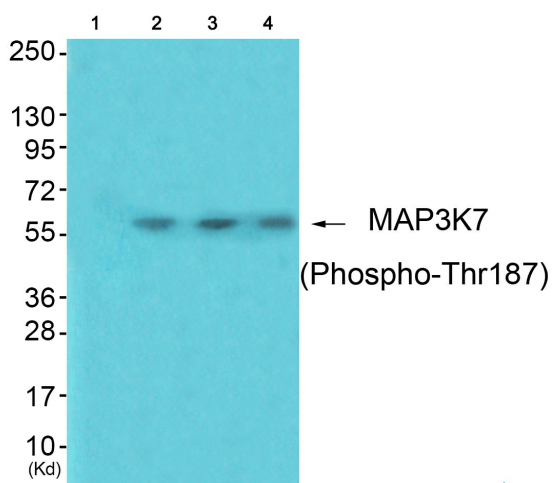
| | |
|------------------------------|---|
| Product Type: | Primary Antibodies |
| Applications: | WB |
| Recommended Dilution: | WB: 1:500~1:3000 ELISA: 1:10000 |
| Reactivity: | Human, Mouse, Rat |
| Modifications: | Phospho-specific |
| Host: | Rabbit |
| Isotype: | IgG |
| Clonality: | Polyclonal |
| Immunogen: | The antiserum was produced against synthesized phosphopeptide derived from human MAP3K7 around the phosphorylation site of threonine 187 (H-M-TP-N-N). |
| Formulation: | Phosphate buffered saline (without Mg ²⁺ and Ca ²⁺), pH 7.4, 150mM NaCl, 0.02% sodium azide and 50% glycerol. |
| Concentration: | lot specific |
| Purification: | The antibody was affinity-purified from rabbit antiserum by affinity-chromatography using epitope-specific immunogen. |
| Conjugation: | Unconjugated |
| Storage: | Store at -20°C as received. |
| Stability: | Stable for 12 months from date of receipt. |
| Gene Name: | mitogen-activated protein kinase kinase kinase 7 |
| Database Link: | NP_663304 Entrez Gene 26409 Mouse Entrez Gene 313121 Rat Entrez Gene 6885 Human O43318 |
| Synonyms: | MEKK7; TAK1; TGF1a |
| Protein Families: | Druggable Genome, Protein Kinase |
| Protein Pathways: | Adherens junction, MAPK signaling pathway, NOD-like receptor signaling pathway, RIG-I-like receptor signaling pathway, T cell receptor signaling pathway, Toll-like receptor signaling pathway, Wnt signaling pathway |



[View online »](#)

Product images:


Western blot analysis of extracts from 3T3 cells, treated with heat shock, using MAP3K7 (Phospho-Thr187) antibody. The lane on the right is treated with the synthesized peptide.



Western blot analysis of extracts from 3T3 cells (Lane 2), A549 cells (Lane 3) and HeLa cells (Lane 4), using MAP3K7 (Phospho-Thr187) Antibody. The lane on the left is treated with synthesized peptide.