

## Product datasheet for **TA326040**

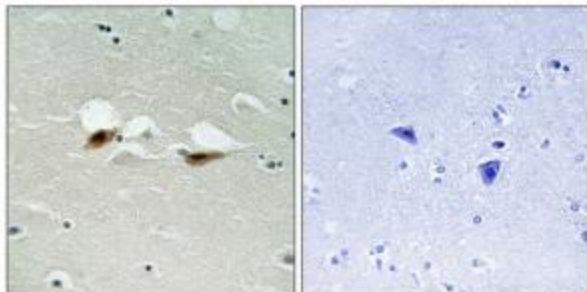
### ATF2 Rabbit Polyclonal Antibody

#### Product data:

Product Type:	Primary Antibodies
Applications:	IHC
Recommended Dilution:	IHC: 1:50~1:100 ELISA: 1:5000
Reactivity:	Human, Mouse, Rat
Modifications:	Phospho-specific
Host:	Rabbit
Isotype:	IgG
Clonality:	Polyclonal
Immunogen:	The antiserum was produced against synthesized phosphopeptide derived from human ATF-2 around the phosphorylation site of serine 472 (A-L-SP-Q-I).
Formulation:	Phosphate buffered saline (without Mg <sup>2+</sup> and Ca <sup>2+</sup> ), pH 7.4, 150mM NaCl, 0.02% sodium azide and 50% glycerol.
Concentration:	lot specific
Purification:	The antibody was affinity-purified from rabbit antiserum by affinity-chromatography using epitope-specific immunogen.
Conjugation:	Unconjugated
Storage:	Store at -20°C as received.
Stability:	Stable for 12 months from date of receipt.
Gene Name:	activating transcription factor 2
Database Link:	<a href="#">NP_001243019</a> <a href="#">Entrez Gene 11909 Mouse</a> <a href="#">Entrez Gene 81647 Rat</a> <a href="#">Entrez Gene 1386 Human</a> <a href="#">P15336</a>
Synonyms:	CRE-BP1; CREB-2; CREB2; HB16; TREB7
Protein Families:	Druggable Genome, Transcription Factors
Protein Pathways:	MAPK signaling pathway



[View online »](#)

**Product images:**

Immunohistochemistry analysis of paraffin-embedded human brain tissue using ATF-2 (Phospho-Ser472) antibody. The picture on the right is treated with the synthesized peptide.