

## Product datasheet for **TA326039S**

### FOXO1 Rabbit Polyclonal Antibody

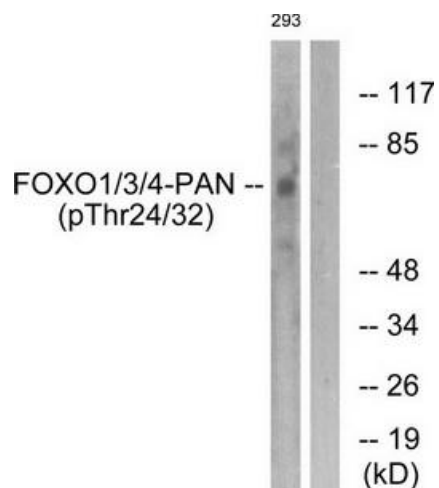
#### Product data:

Product Type:	Primary Antibodies
Applications:	WB
Recommended Dilution:	WB: 1:500~1:3000 IHC: 1:50~1:100 ELISA: 1:5000
Reactivity:	Human, Mouse, Rat
Modifications:	Phospho-specific
Host:	Rabbit
Isotype:	IgG
Clonality:	Polyclonal
Immunogen:	The antiserum was produced against synthesized phosphopeptide derived from human FOXO1/3/4-pan around the phosphorylation site of threonine 24/32 (S-C-TP-W-P).
Formulation:	Phosphate buffered saline (without Mg <sup>2+</sup> and Ca <sup>2+</sup> ), pH 7.4, 150mM NaCl, 0.02% sodium azide and 50% glycerol.
Concentration:	lot specific
Purification:	The antibody was affinity-purified from rabbit antiserum by affinity-chromatography using epitope-specific immunogen.
Conjugation:	Unconjugated
Storage:	Store at -20°C as received.
Stability:	Stable for 12 months from date of receipt.
Gene Name:	forkhead box O1
Database Link:	<a href="#">NP_002006</a> <a href="#">Entrez Gene 56458 Mouse</a> <a href="#">Entrez Gene 84482 Rat</a> <a href="#">Entrez Gene 2308 Human</a> <a href="#">Q12778</a>
Synonyms:	FKH1; FKHR; FOXO1A
Protein Families:	Druggable Genome, Transcription Factors
Protein Pathways:	Insulin signaling pathway, Pathways in cancer, Prostate cancer



[View online »](#)

## Product images:



Western blot analysis of extracts from 293 cells, treated with Serum (20%, 15mins), using FOXO1/3/4-PAN (Phospho-Thr24/32) antibody. The lane on the right is treated with the synthesized peptide.