

## Product datasheet for **TA326035**

### PPP1R14A Rabbit Polyclonal Antibody

#### Product data:

Product Type:	Primary Antibodies
Applications:	WB
Recommended Dilution:	WB: 1:500-1:2000; IHC: 1:50-1:200
Reactivity:	Human, Mouse, Rat
Modifications:	Phospho-specific
Host:	Rabbit
Isotype:	IgG
Clonality:	Polyclonal
Immunogen:	The antiserum was produced against A synthesized peptide derived from human CPI17 alpha around the phosphorylation site of Threonine 38
Formulation:	Rabbit IgG in phosphate buffered saline , pH 7.4, 150mM NaCl, 0.02% sodium azide and 50% glycerol.
Concentration:	lot specific
Purification:	The antibody was affinity-purified from rabbit antiserum by affinity-chromatography using epitope-specific peptide.
Conjugation:	Unconjugated
Storage:	Store at -20°C as received.
Stability:	Stable for 12 months from date of receipt.
Predicted Protein Size:	22 kDa
Gene Name:	protein phosphatase 1 regulatory inhibitor subunit 14A
Database Link:	<a href="#">NP_150281</a> <a href="#">Entrez Gene 68458 Mouse</a> <a href="#">Entrez Gene 114004 Rat</a> <a href="#">Entrez Gene 94274 Human</a> <a href="#">Q96A00</a>
Background:	PPP1R14A a phosphorylation-dependent inhibitory subunit of protein phosphatase 1 (PP-1A). Phosphorylation by PKC regulates its binding to PP-1A. Acts co-operatively to inhibit myosin light chain phosphatase (MLCP) activity.
Synonyms:	CPI-17; CPI17; PPP1INL

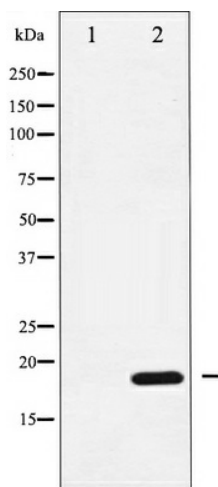


[View online »](#)

Protein Families: Druggable Genome

Protein Pathways: Vascular smooth muscle contraction

**Product images:**



Western blot analysis of CPI17 alpha phosphorylation expression in RAW264.7 whole cell lysates, The lane on the left is treated with the antigen-specific peptide.