

Product datasheet for **TA326031**

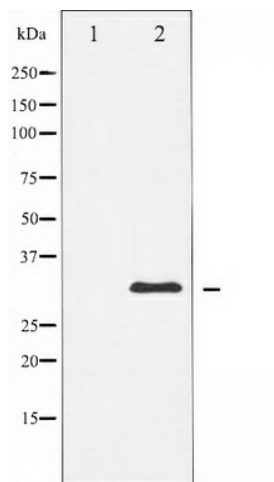
DARPP32 (PPP1R1B) Rabbit Polyclonal Antibody

Product data:

Product Type:	Primary Antibodies
Applications:	WB
Recommended Dilution:	WB: 1:500-1:2000; IHC: 1:50-1:200
Reactivity:	Human, Mouse, Rat
Host:	Rabbit
Isotype:	IgG
Clonality:	Polyclonal
Immunogen:	The antiserum was produced against A synthesized peptide derived from human DARPP-32
Formulation:	Rabbit IgG in phosphate buffered saline , pH 7.4, 150mM NaCl, 0.02% sodium azide and 50% glycerol.
Concentration:	lot specific
Purification:	The antibody was affinity-purified from rabbit antiserum by affinity-chromatography using epitope-specific peptide.
Conjugation:	Unconjugated
Storage:	Store at -20°C as received.
Stability:	Stable for 12 months from date of receipt.
Predicted Protein Size:	32 kDa
Gene Name:	protein phosphatase 1 regulatory inhibitor subunit 1B
Database Link:	NP_115568 Entrez Gene 19049 Mouse Entrez Gene 360616 Rat Entrez Gene 84152 Human Q9UD71
Background:	DARPP-32 a member of the protein phosphatase inhibitor 1 family. A dopamine- and cyclic AMP-regulated neuronal phosphoprotein. Both dopaminergic and glutamatergic (NMDA) receptor stimulation regulate the extent of DARPP32 phosphorylation, but in opposite directions.
Synonyms:	DARPP-32; DARPP32
Protein Families:	Druggable Genome



[View online »](#)

Product images:

Western blot analysis of DARPP-32 expression in forskolin treated COS7 whole cell lysates, The lane on the left is treated with the antigen-specific peptide.